



Groupe
Aya & Yusra

Yuzarsif 3

Une Architecture Élégante

Pour Réservation Contactez

+212 661 996 622

+212 611 499 939

  info@ayayusra.com



Perspective



Perspective



Perspective



Perspective



Perspective



Perspective



Perspective



Perspective



Perspective



Perspective



Perspective



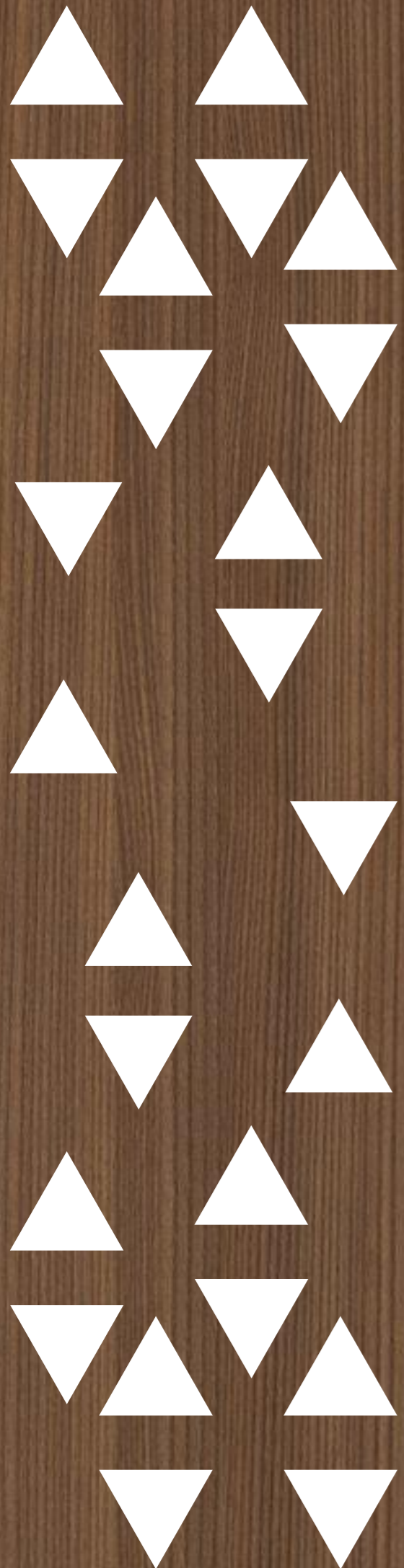
Perspective



Groupe
Aya & Yusra



Les Etages



Rez de chaussée

Consistance

06 Appartements



Rez de chaussée

Consistance

06 Appartements



1^{er} étage

Consistance
06 Appartements



1^{er} étage

Consistance

06 Appartements



2ème étage

Consistance
08 *Appartements*



2^{ème} étage

Consistance

08 Appartements



3^{ème} étage

Consistance
08 *Appartements*



Consistance
08 *Appartements*

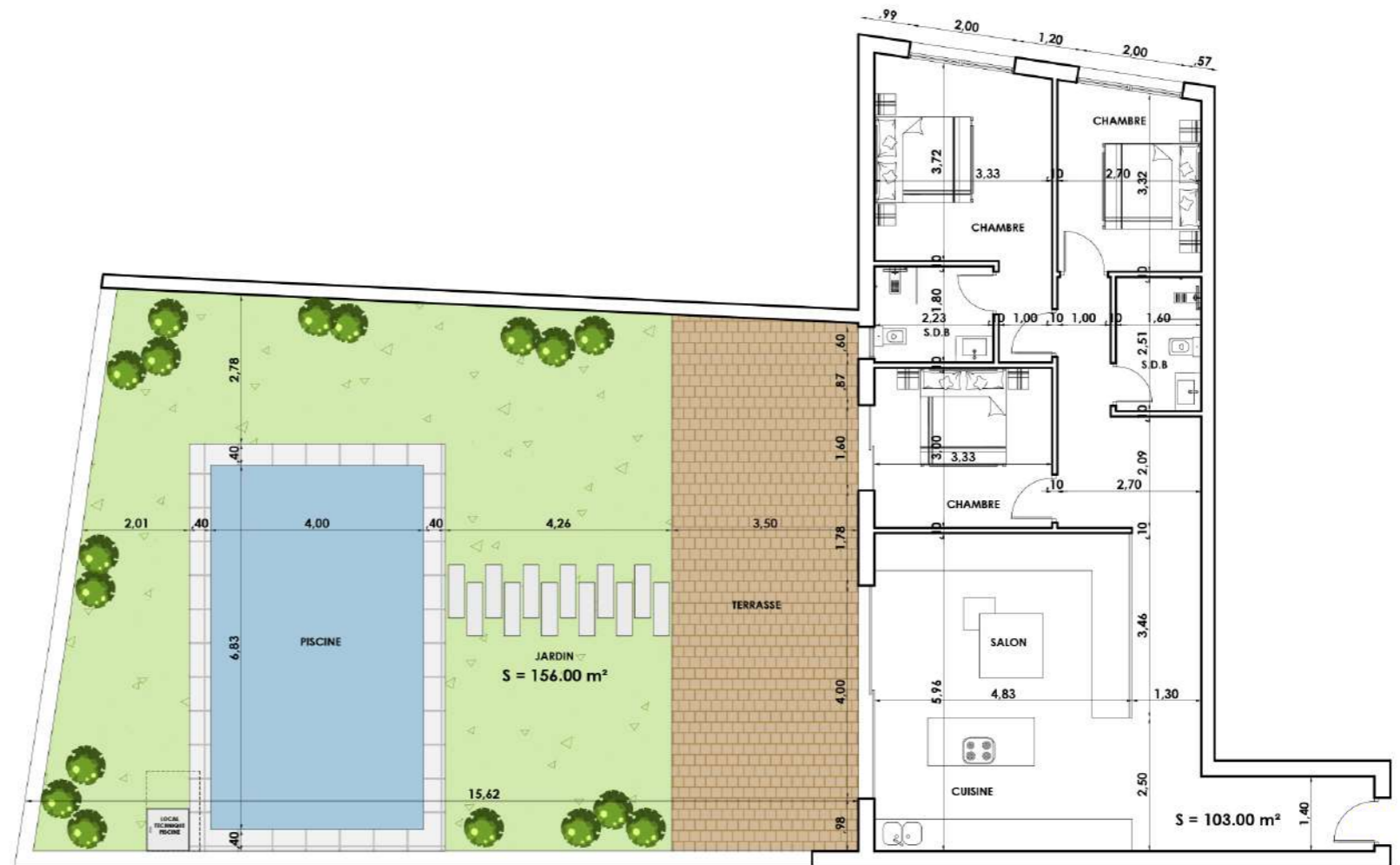


Groupe
Aya & Yusra



*Type des
appartements
Rez de chaussée*

Rez de Chaussée
Type 0-A



Consistance

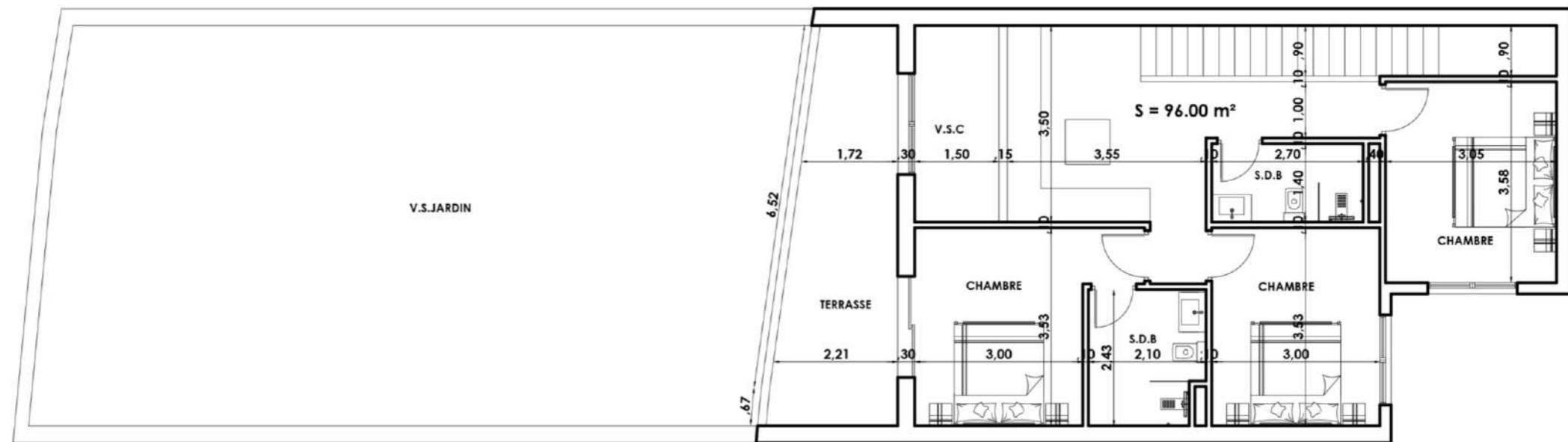
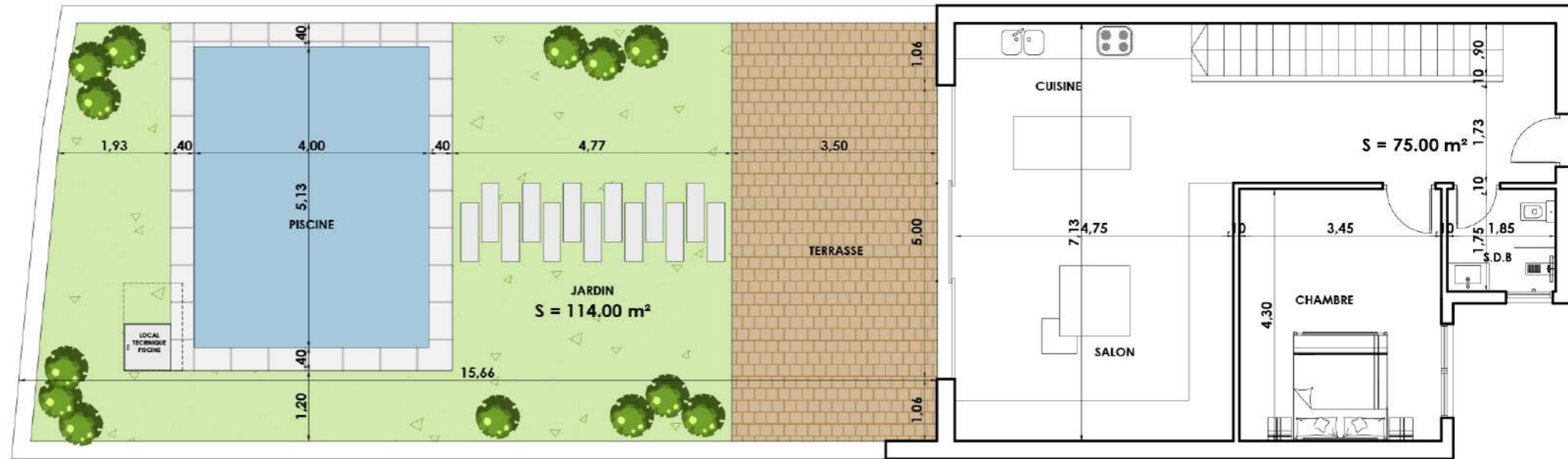
- 01 *Salon*
- 03 *Chambres*
- 01 *Cuisine*
- 02 *Salle de bain*
- 01 *Piscine*

$S = 103,00 \text{ m}^2$

$S. \text{Piscine} = 156,00 \text{ m}^2$



Rez de Chaussée
Type 0-B



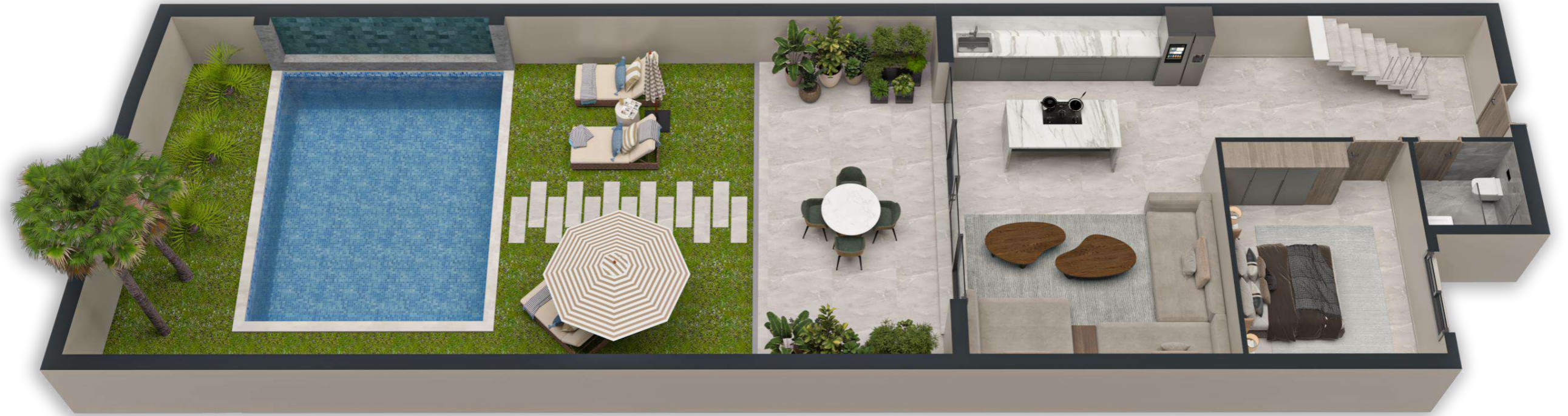
Consistance

- 01 Salon et Sejour*
- 04 Chambres*
- 01 Cuisine*
- 03 Salle de bain*
- 01 Piscine*

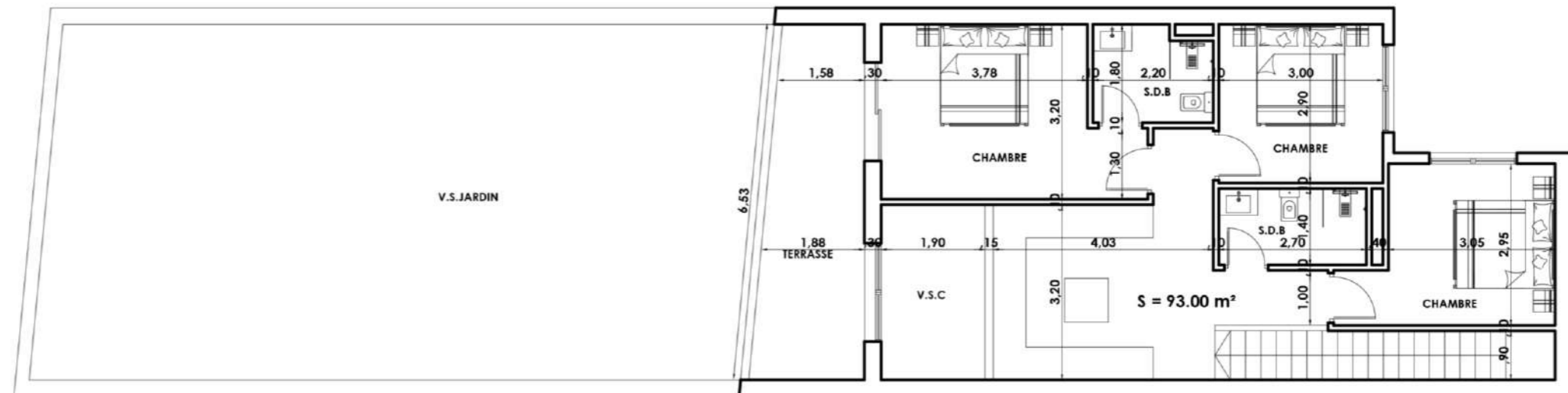
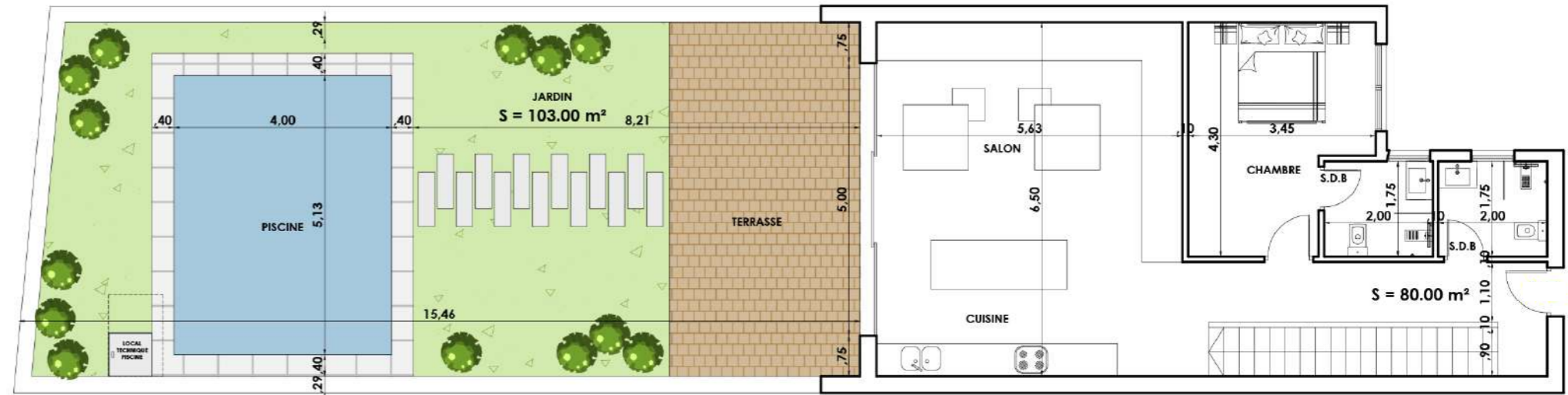
S = 171,00 m²

S. Piscine = 114,00 m²

Rez de Chaussée
Type 0-B



Rez de Chaussée
Type 0-C



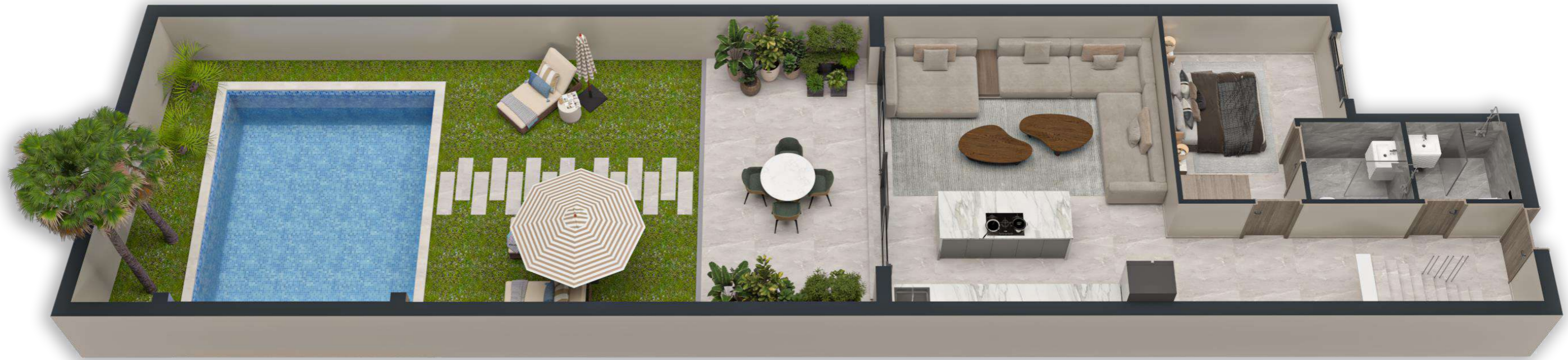
Consistance

- 01 Salon et Sejour*
- 04 Chambres*
- 01 Cuisine*
- 04 Salle de bain*
- 01 Piscine*

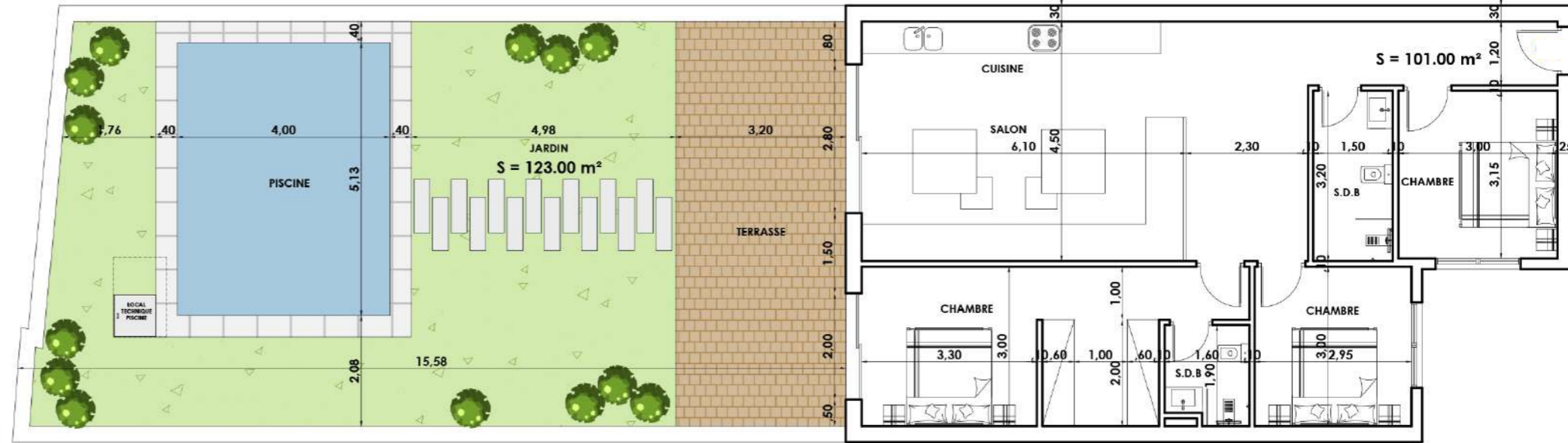
S = 173,00 m²

S. Piscine = 103,00 m²

Rez de Chaussée
Type 0-C



Rez de Chaussée
Type 0-D



Consistance

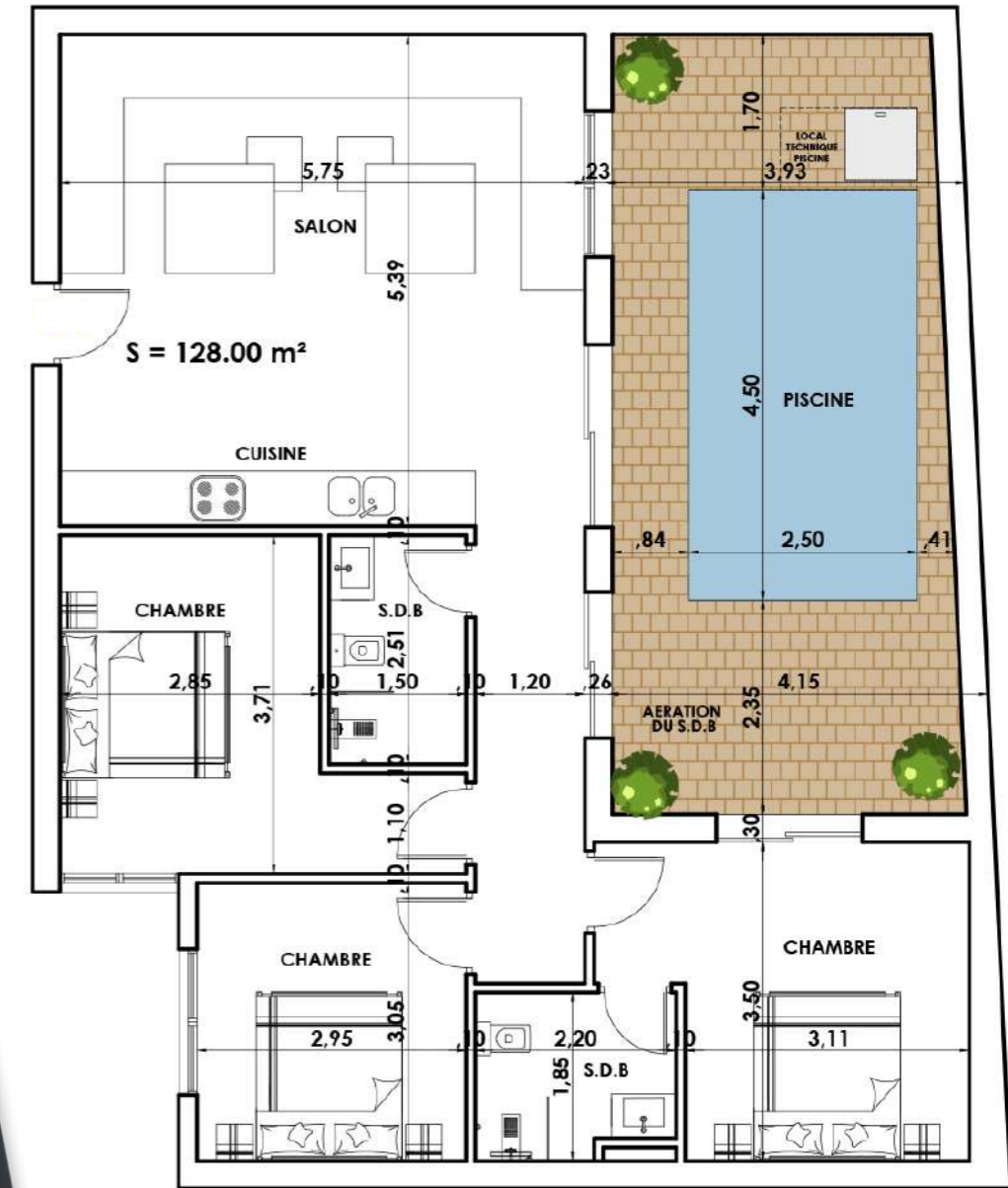
- 01 *Salon*
- 03 *Chambres*
- 01 *Cuisine*
- 02 *Salle de bain*
- 01 *Piscine*

$S = 101,00 \text{ m}^2$

$S.Piscine = 123,00 \text{ m}^2$



Rez de Chaussée
Type 0-E



Consistance

01 *Salon*

03 *Chambres*

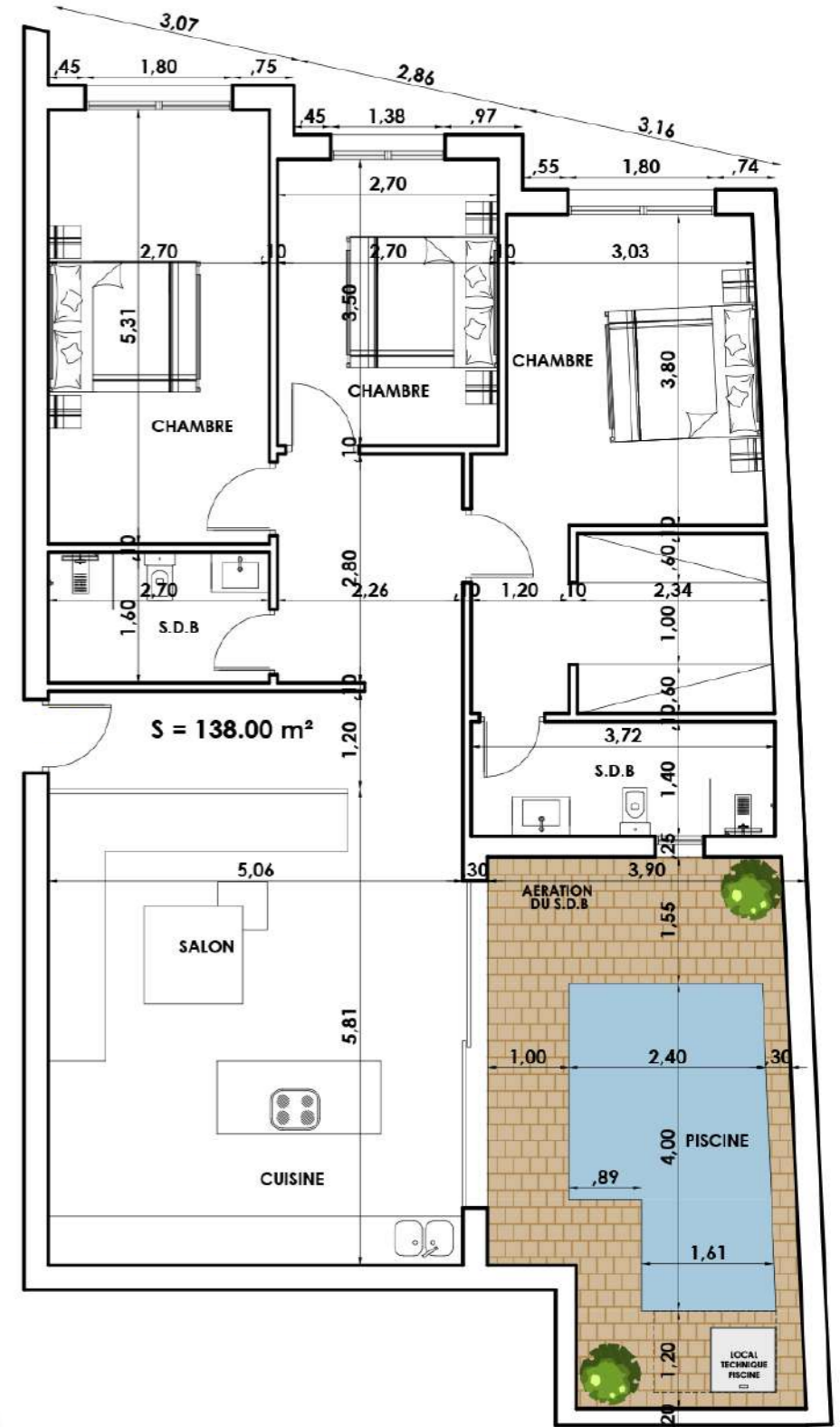
01 *Cuisine*

02 *Salle de bain*

01 *Piscine*

$S = 128,00 \text{ m}^2$

Rez de Chaussée
Type 0-F



Consistance

01 *Salon*

03 *Chambres*

01 *Cuisine*

02 *Salle de bain*

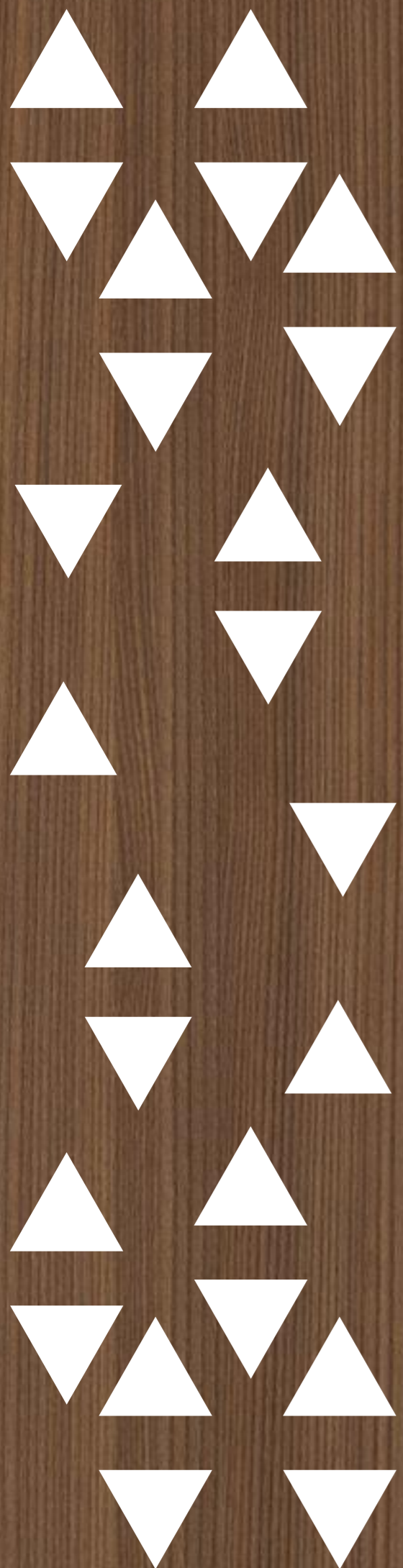
01 *Piscine*

S = 138,00 m²

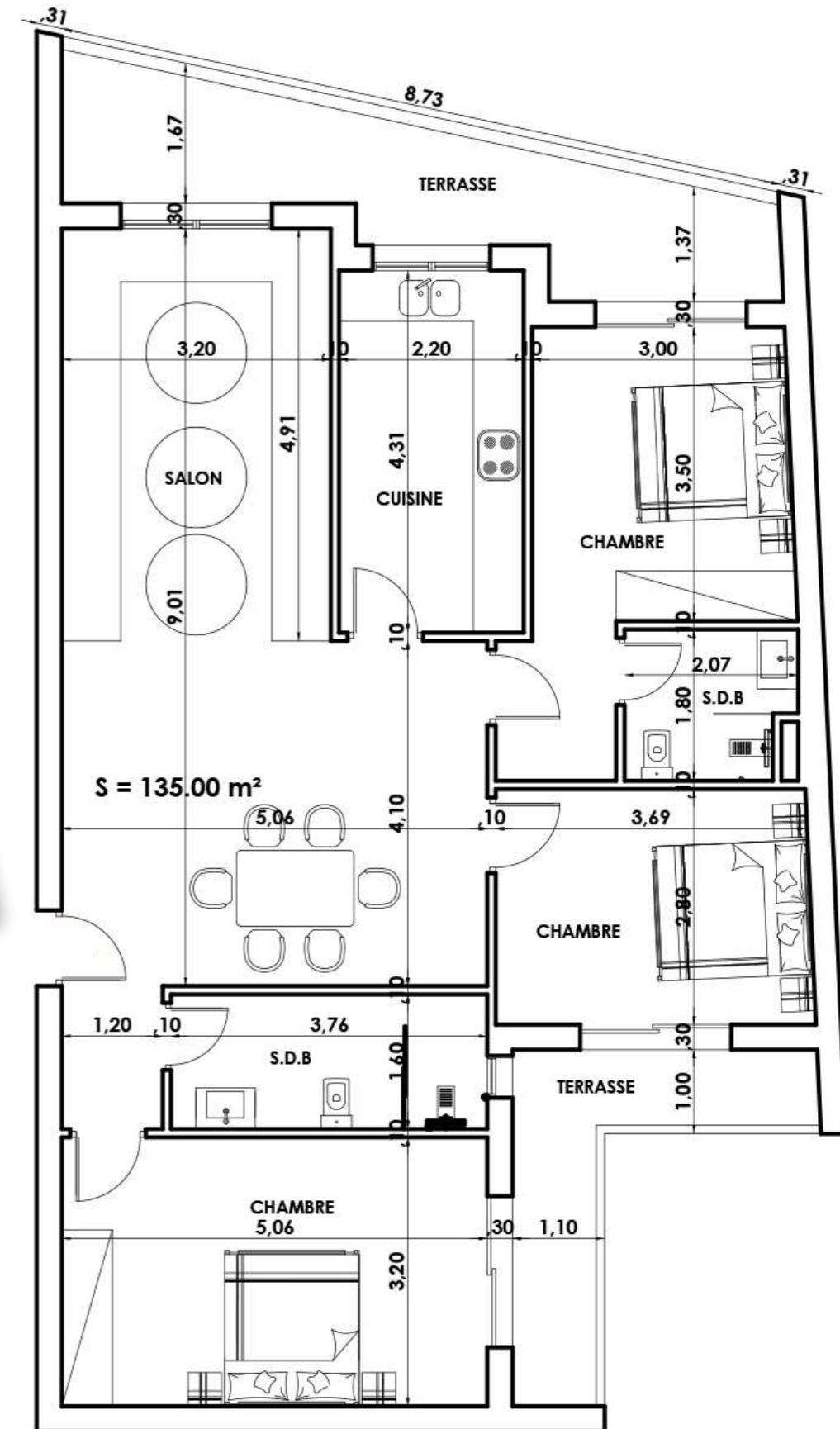
Groupe
Aya & Yusra



*Type des
appartements*
1^{er} étage



1^{er} étage
Type 1-A

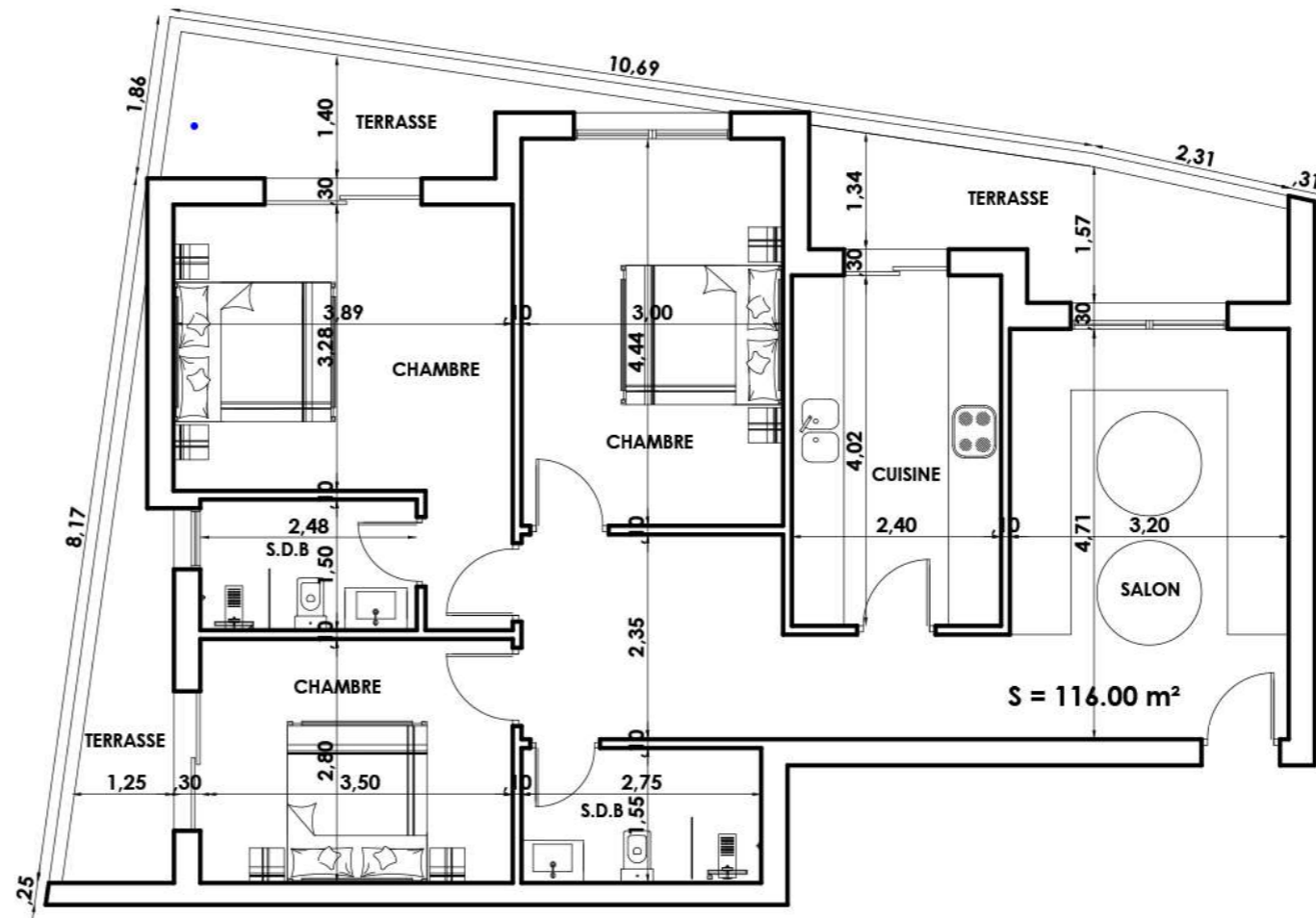


Consistance

- 01 Salon et Sejour
- 03 Chambres
- 01 Cuisine
- 02 Salle de bain
- 02 Terrasse

$S = 135,00 \text{ m}^2$

1^{er} étage
Type 1-B



Consistance

01 Salon

03 Chambres

01 Cuisine

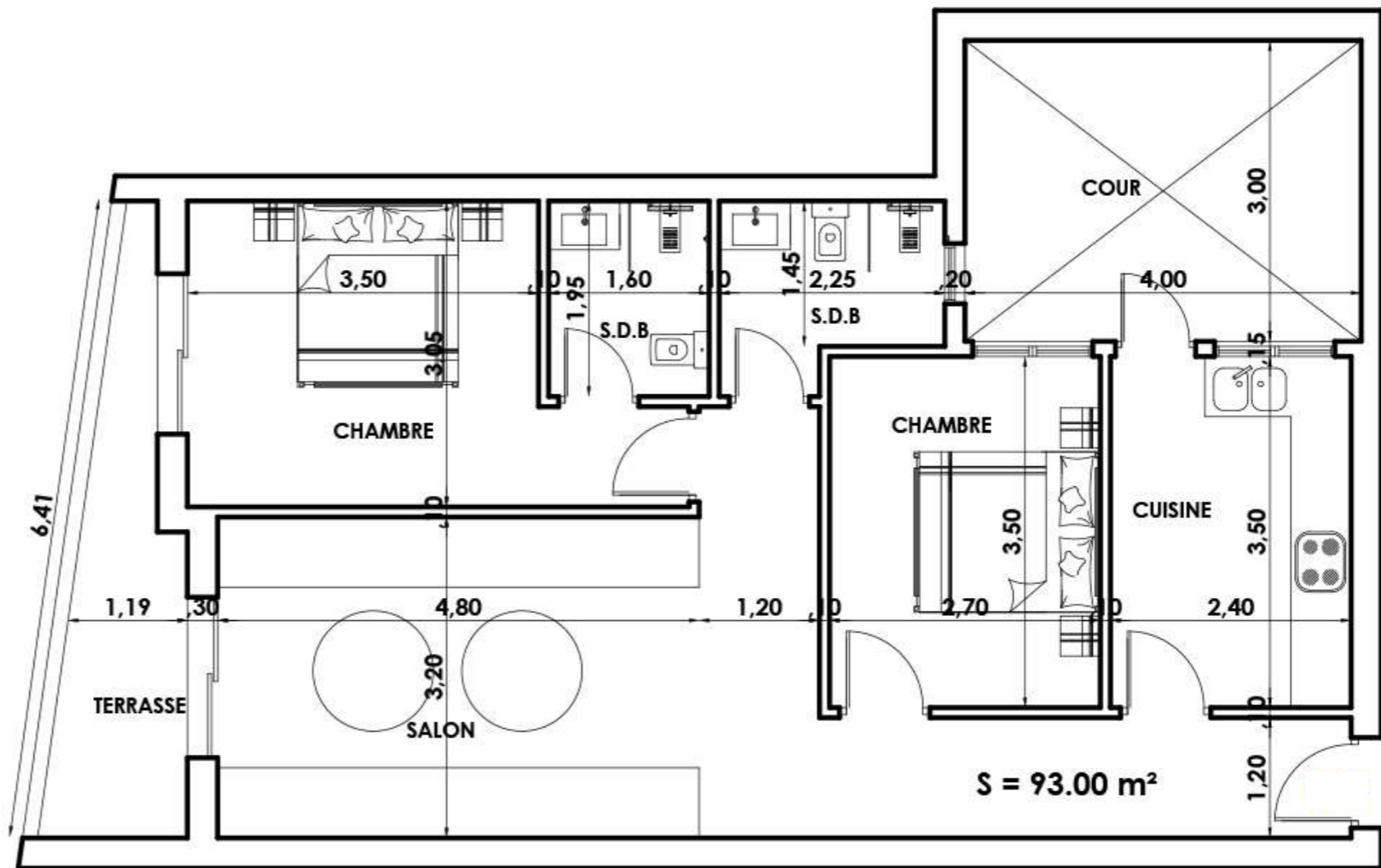
02 Salle de bain

03 Terrasse

S = 116,00 m²



1^{er} étage
Type 1-C



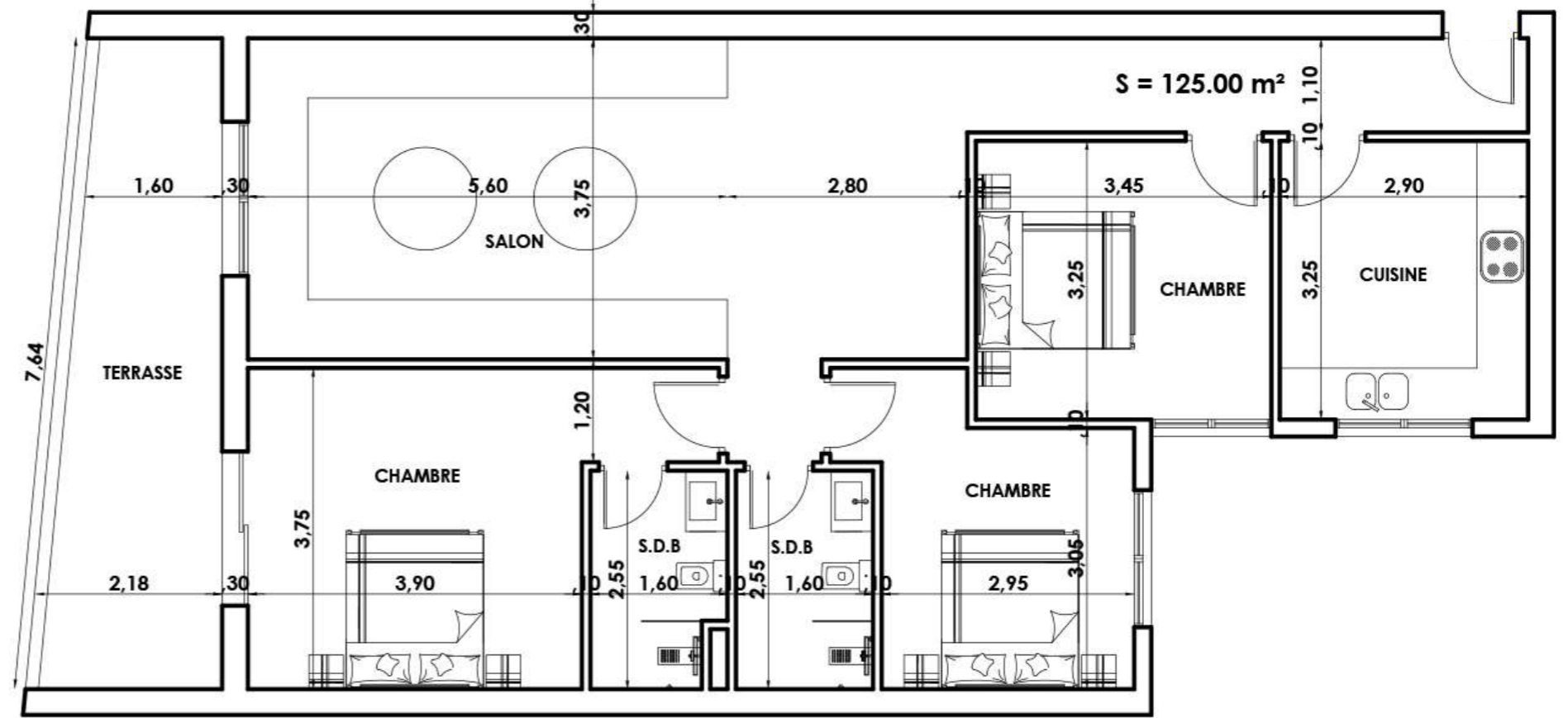
Consistance

- 01 Salon
- 02 Chambres
- 01 Cuisine
- 02 Salle de bain
- 01 Terrasse et Cour

S = 93,00 m²



1^{er} étage
Type 1-D



Consistance

01 *Salon Et Séjour*

03 *Chambres*

01 *Cuisine*

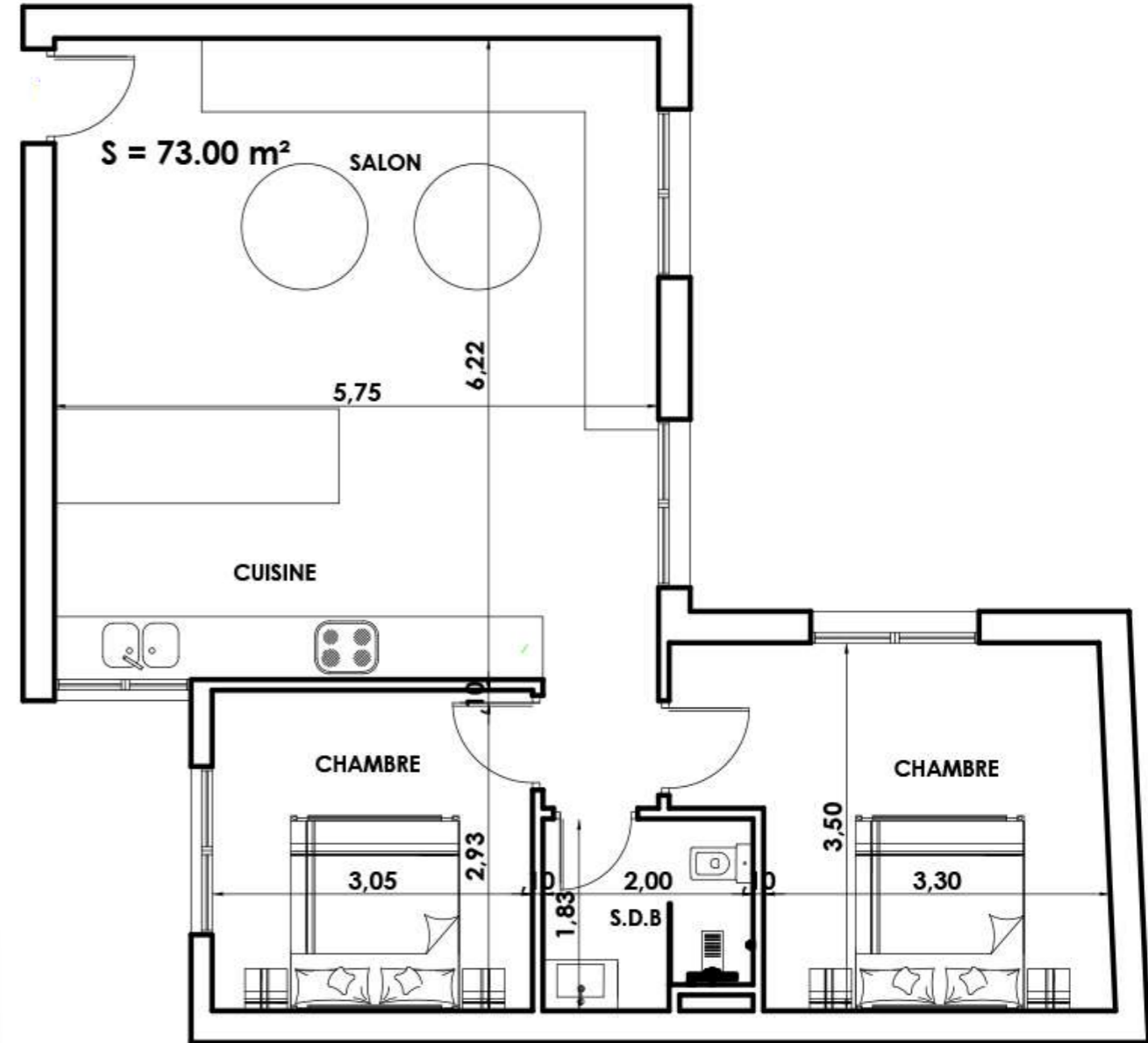
02 *Salle de bain*

01 *Terrasse*

S = 125,00 m²



1^{er} étage
Type 1-E



Consistance

01 *Salon*

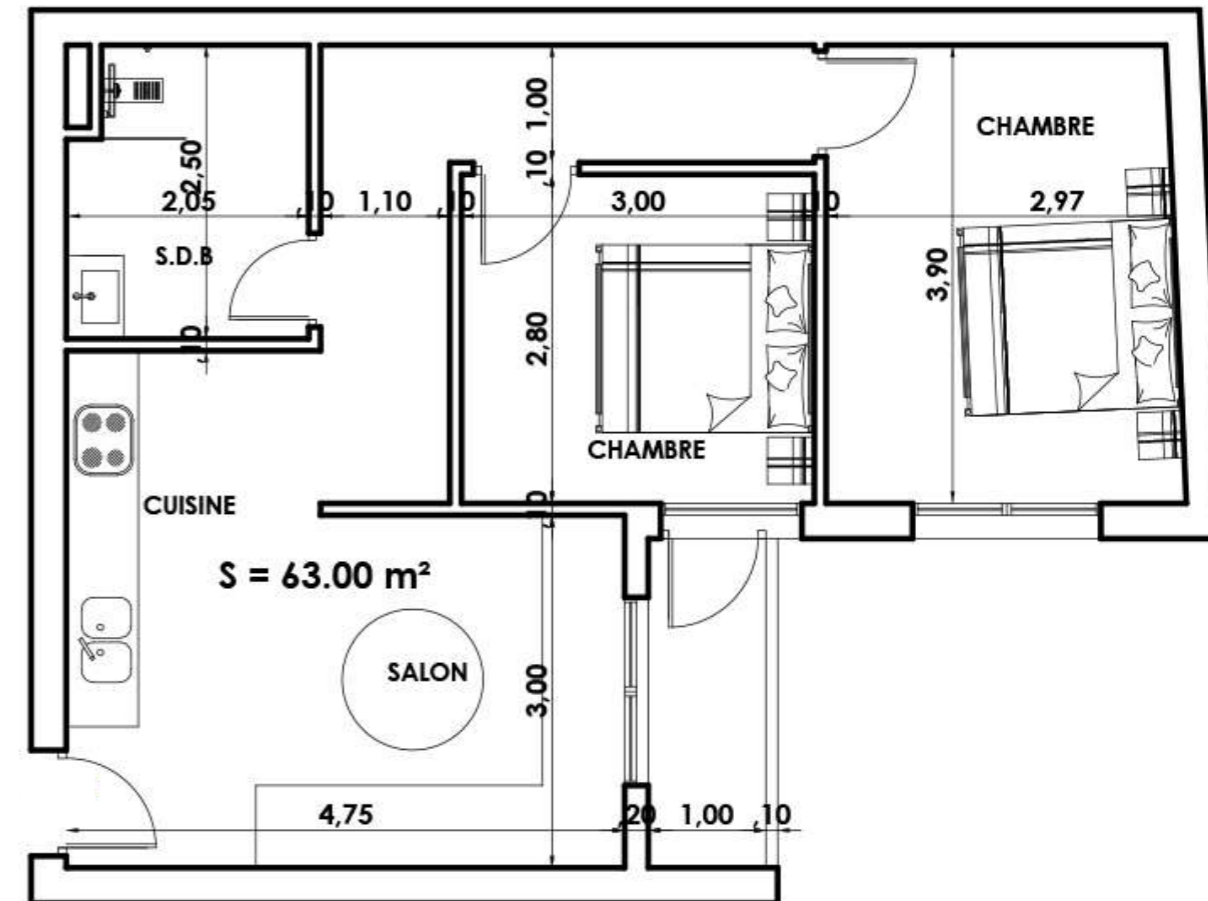
02 *Chambres*

01 *Cuisine*

01 *Salle de bain*

$S = 73,00 \text{ m}^2$

1^{er} étage
Type 1-F



Consistance

01 *Salon*

02 *Chambres*

01 *Cuisine*

01 *Salle de bain*

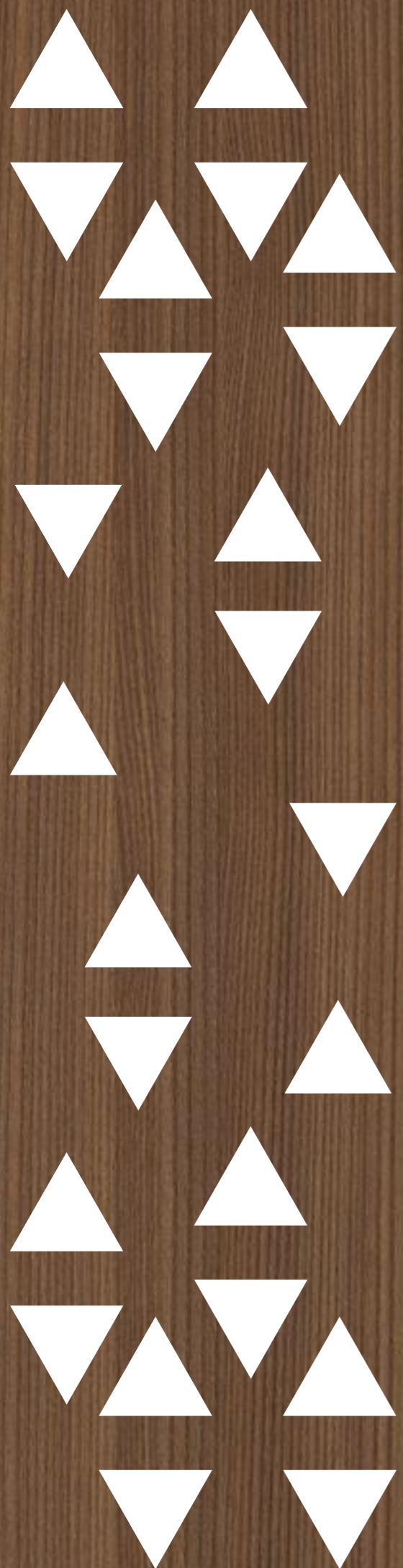
$S = 63,00 \text{ m}^2$



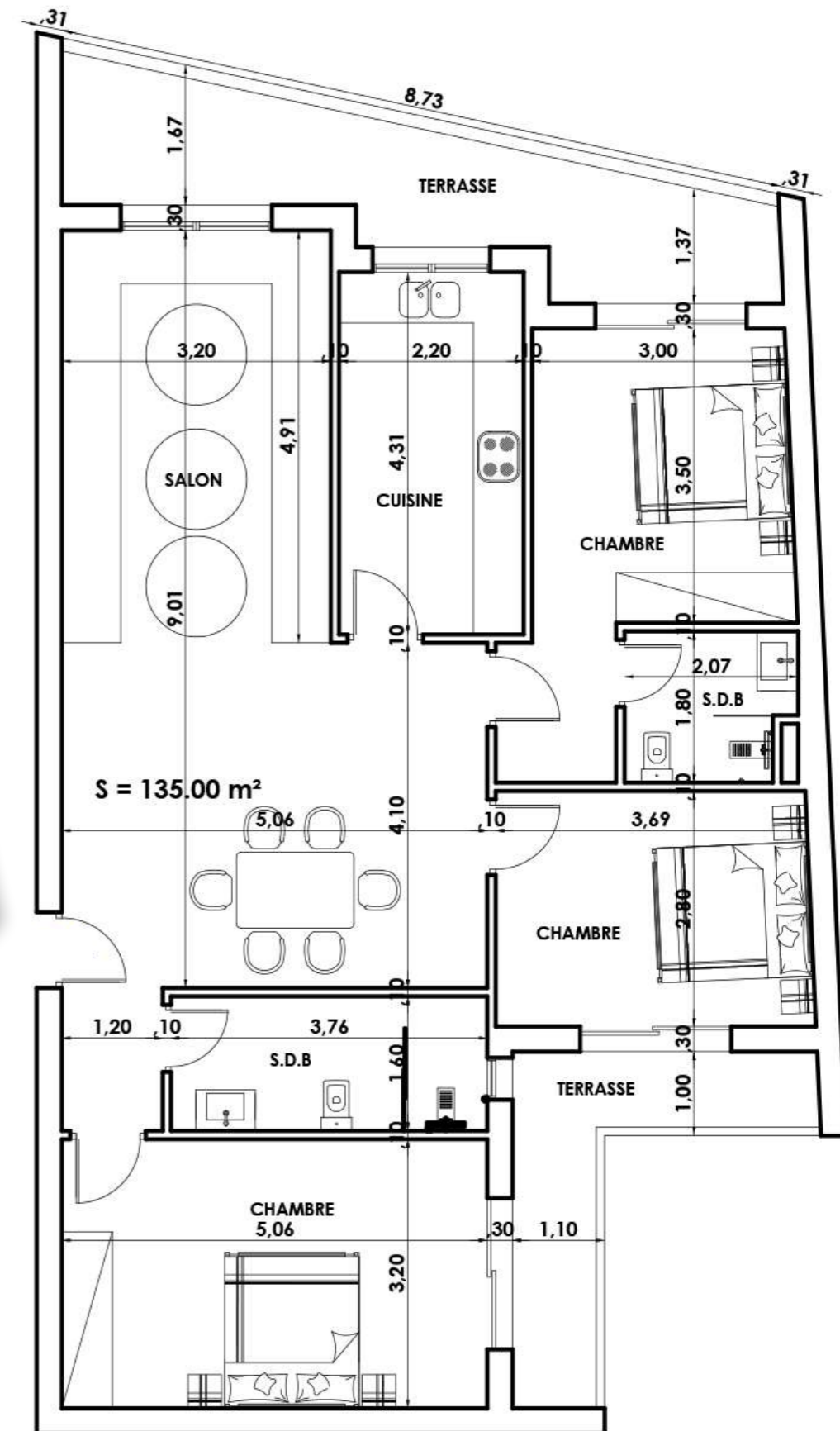
Groupe
Aya & Yusra



*Type des
appartements*
2^{ème} étage



2^{ème} étage
Type 2-A

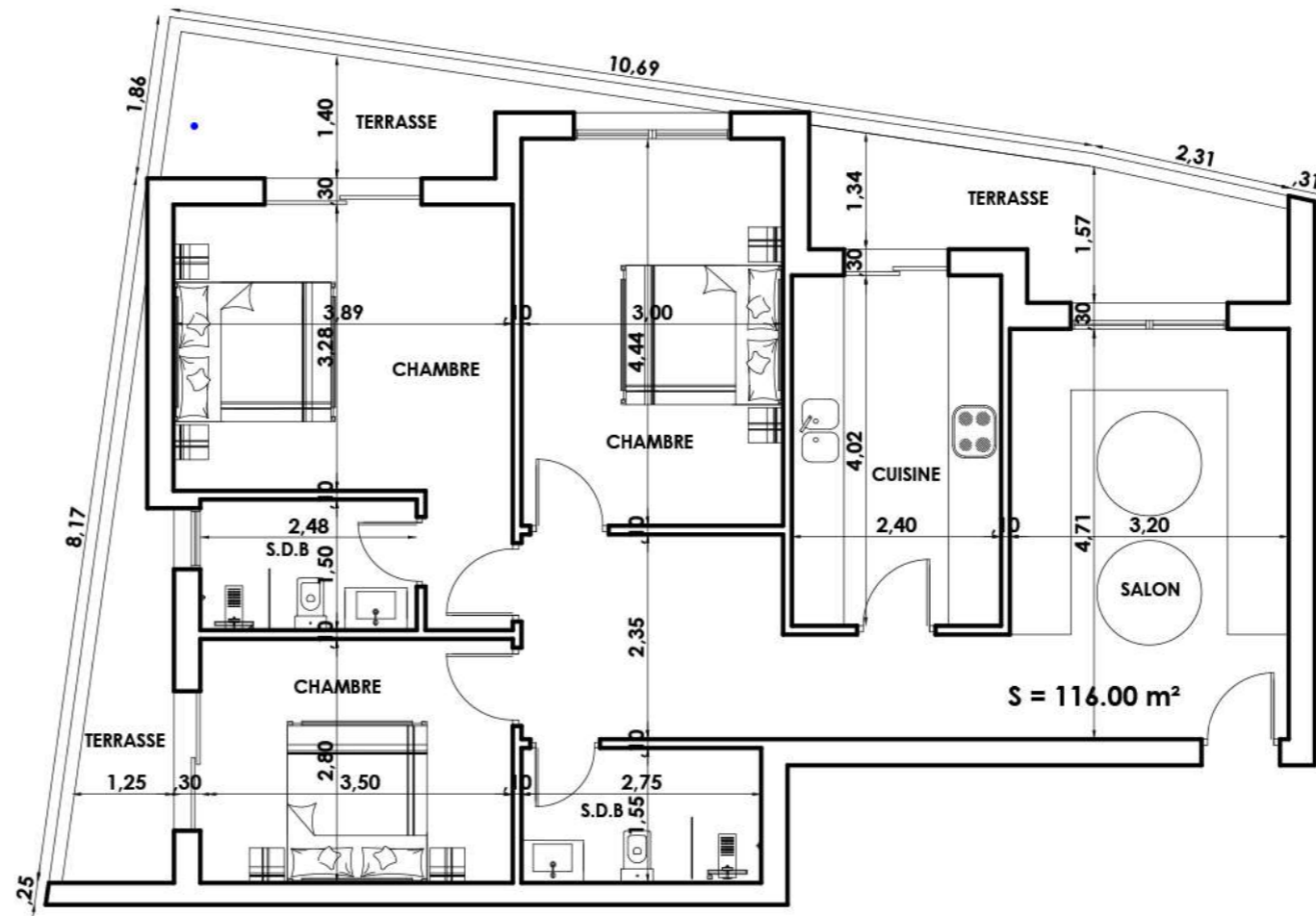


Consistance

- 01 Salon et Sejour
- 03 Chambres
- 01 Cuisine
- 02 Salle de bain
- 02 Terrasse

$S = 135,00 \text{ m}^2$

2^{ème} étage
Type 2-B



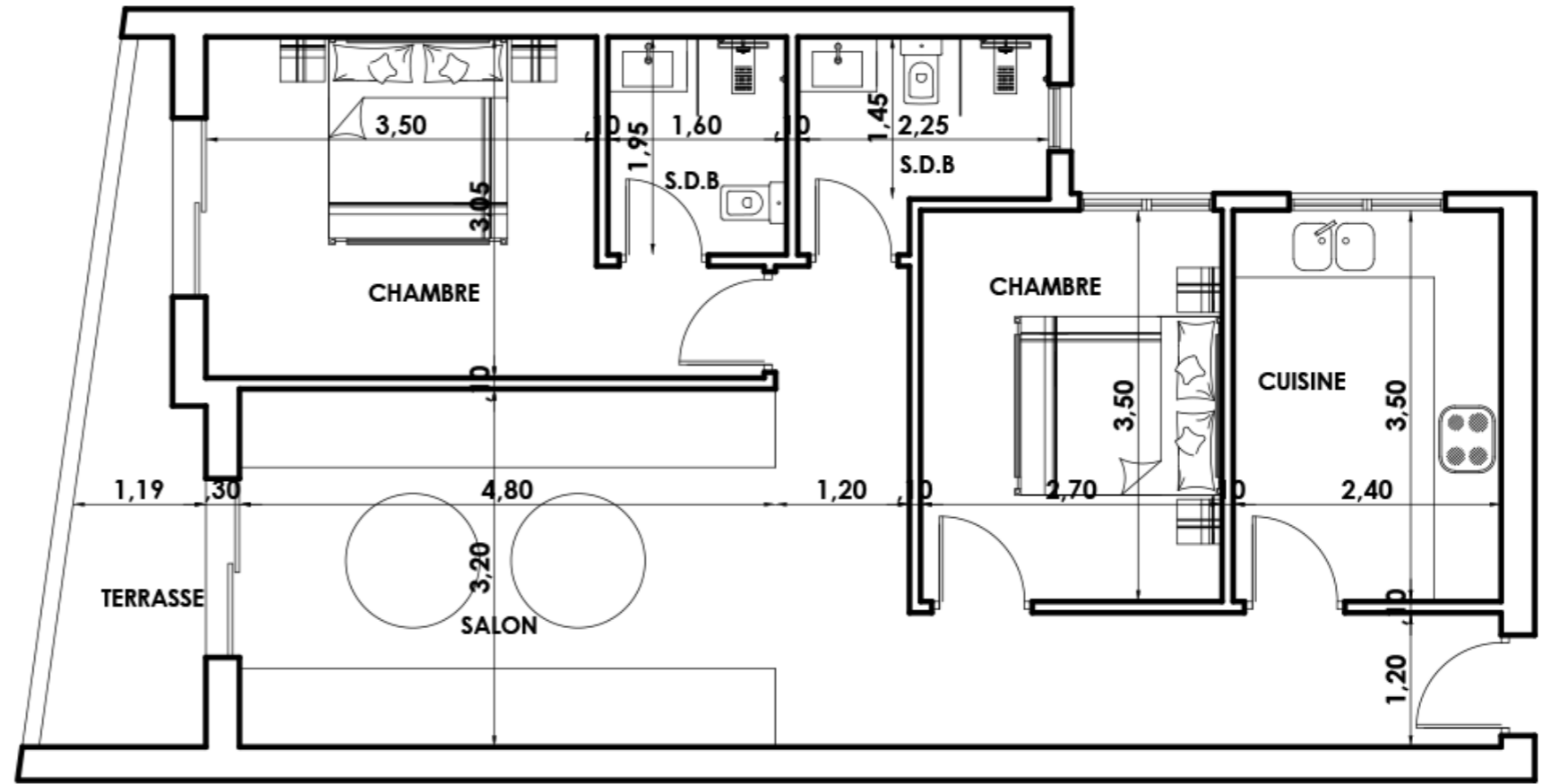
Consistance

- 01 *Salon*
- 03 *Chambres*
- 01 *Cuisine*
- 02 *Salle de bain*
- 03 *Terrasse*

$S = 116,00 \text{ m}^2$



2^{ème} étage
Type 2-C



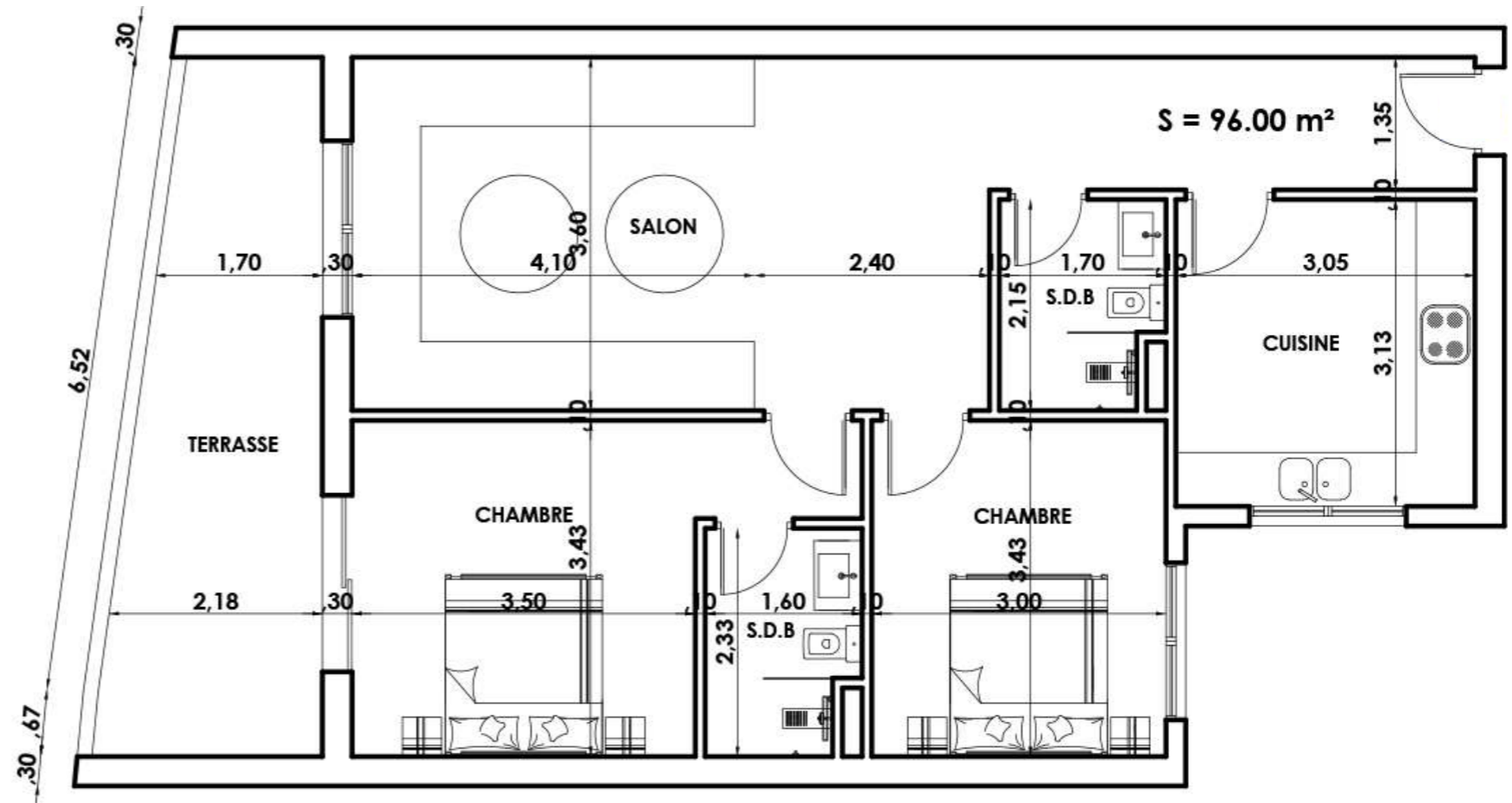
Consistance

- 01 *Salon*
- 02 *Chambres*
- 01 *Cuisine*
- 02 *Salle de bain*
- 01 *Terrasse et Cour*

$S = 80,00 \text{ m}^2$



2^{ème} étage
Type 2-D

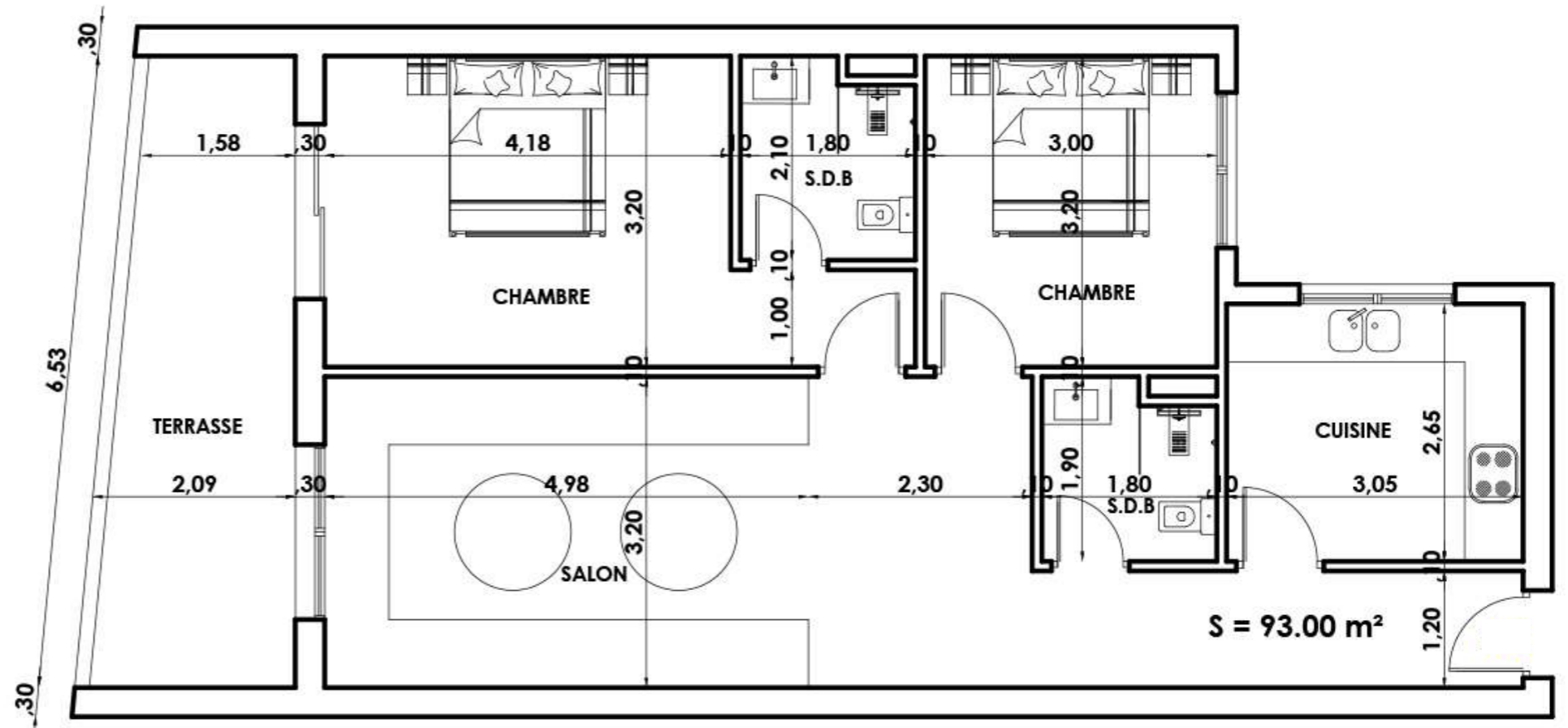


Consistance

- 01 Salon
 - 02 Chambres
 - 01 Cuisine
 - 02 Salle de bain
 - 01 Terrasse
- S = 96,00 m²



2^{ème} étage
Type 2-E



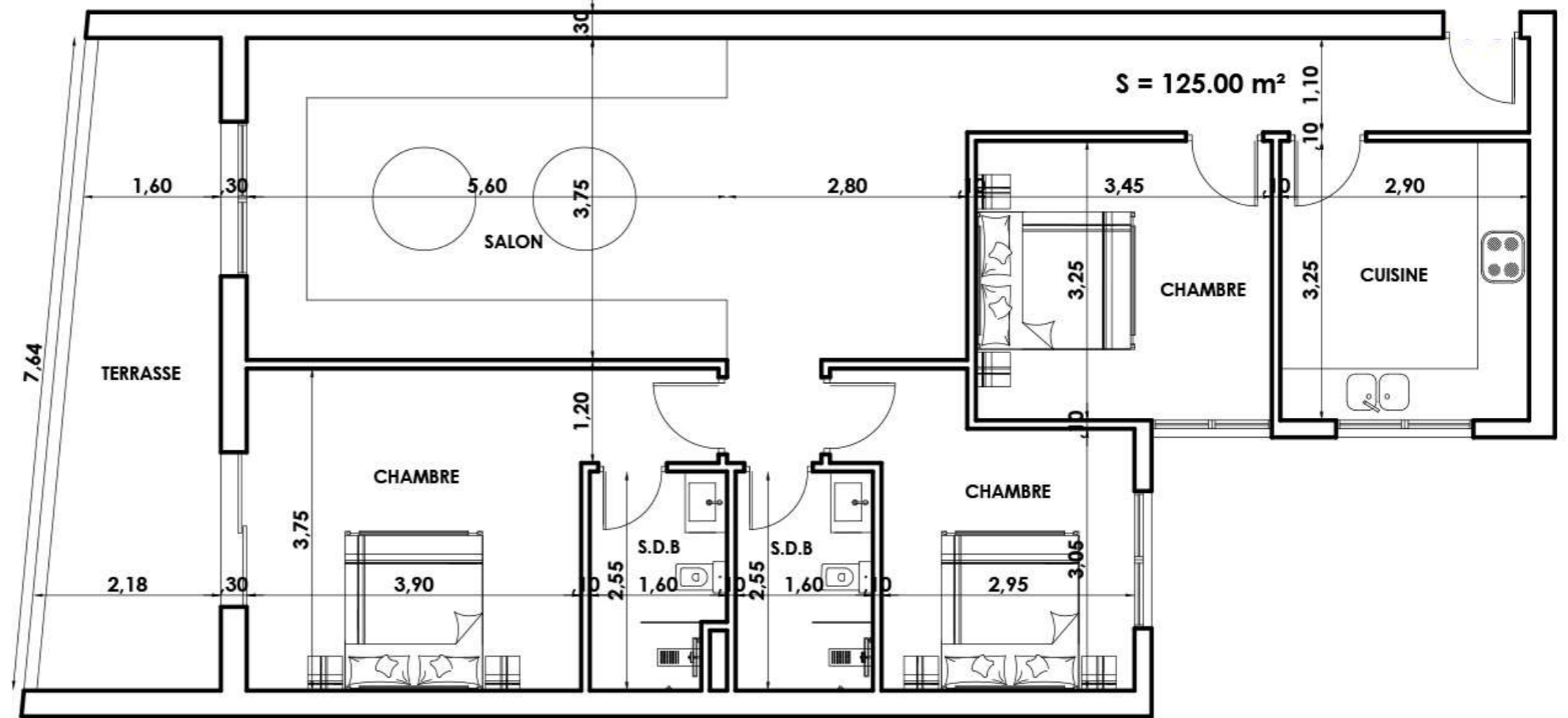
Consistance

- 01 Salon
- 02 Chambres
- 01 Cuisine
- 02 Salle de bain
- 01 Terrasse

S = 93,00 m²



2^{ème} étage
Type 2-F



Consistance

01 *Salon Et Séjour*

03 *Chambres*

01 *Cuisine*

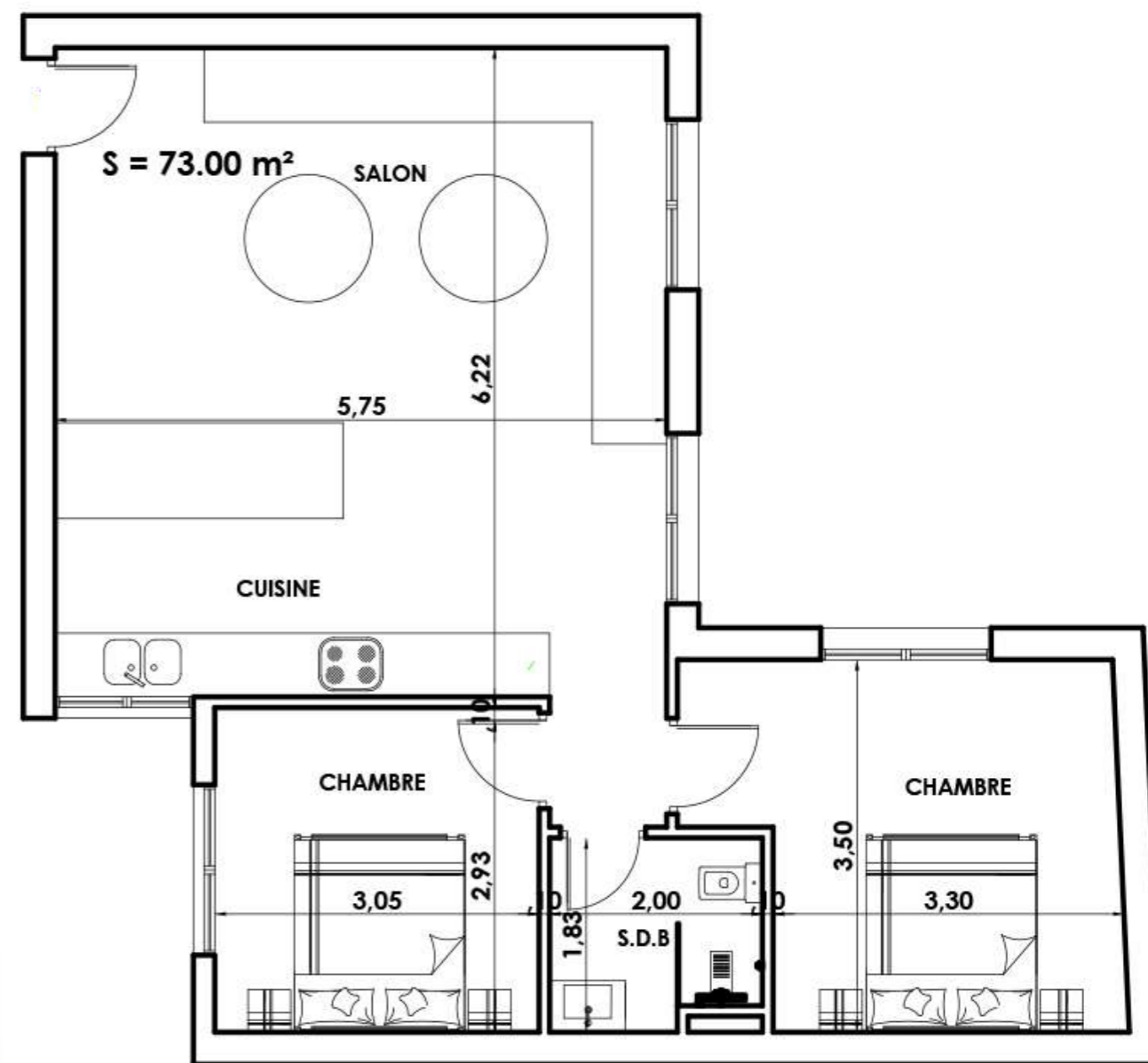
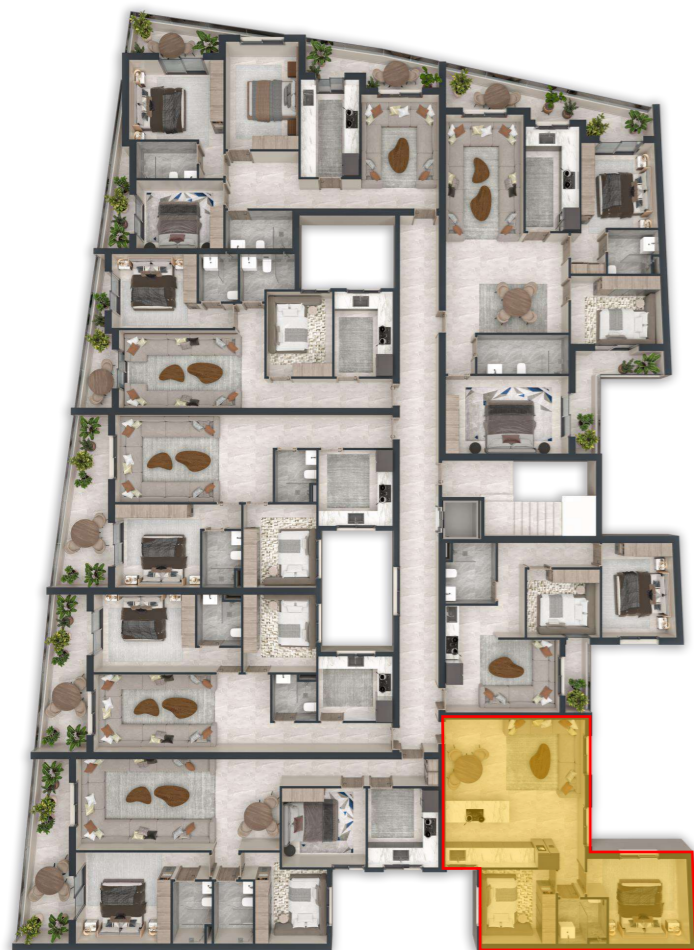
02 *Salle de bain*

01 *Terrasse*

S = 125,00 m²



2^{ème} étage
Type 2-G



Consistance

01 *Salon*

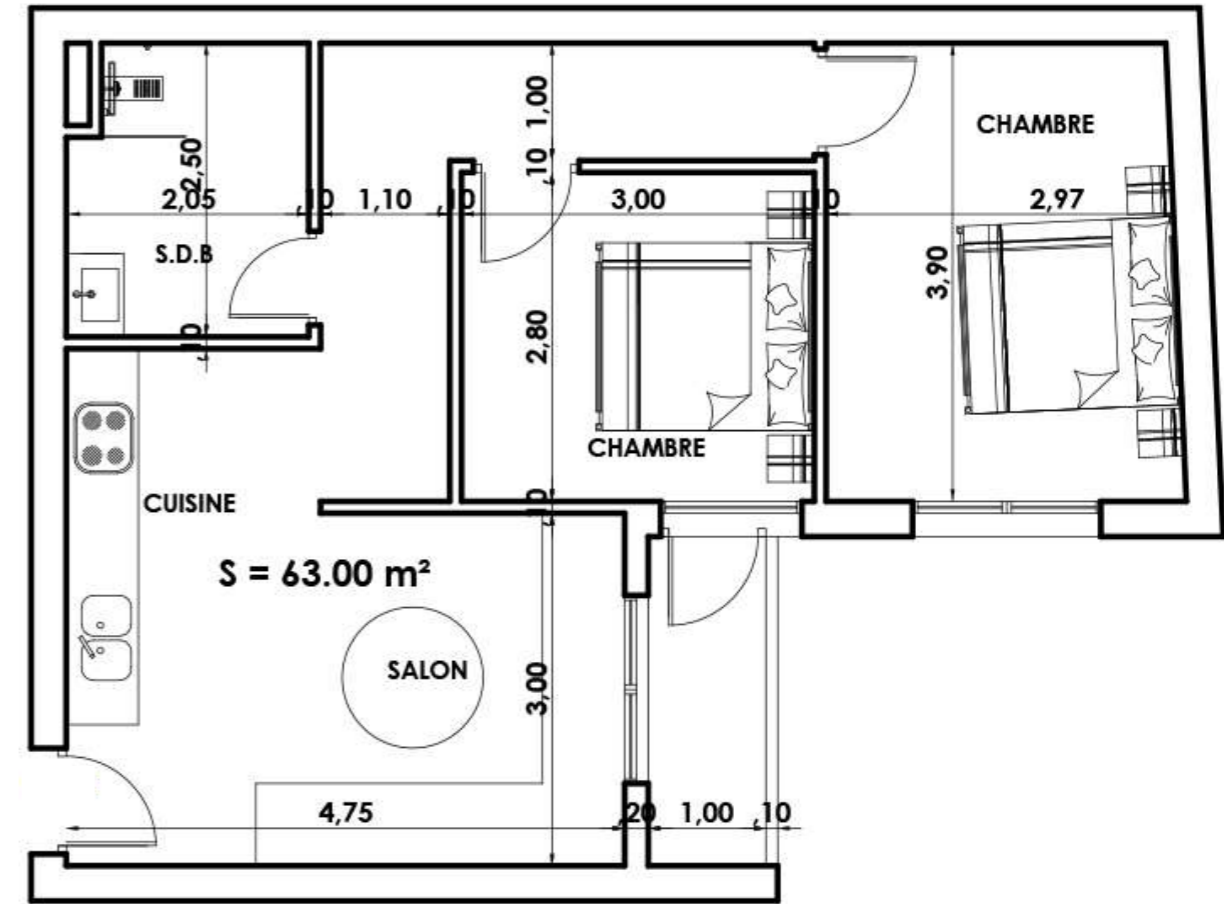
02 *Chambres*

01 *Cuisine*

01 *Salle de bain*

$S = 73,00 \text{ m}^2$

2^{ème} étage
Type 2-H



Consistance

01 *Salon*

02 *Chambres*

01 *Cuisine*

01 *Salle de bain*

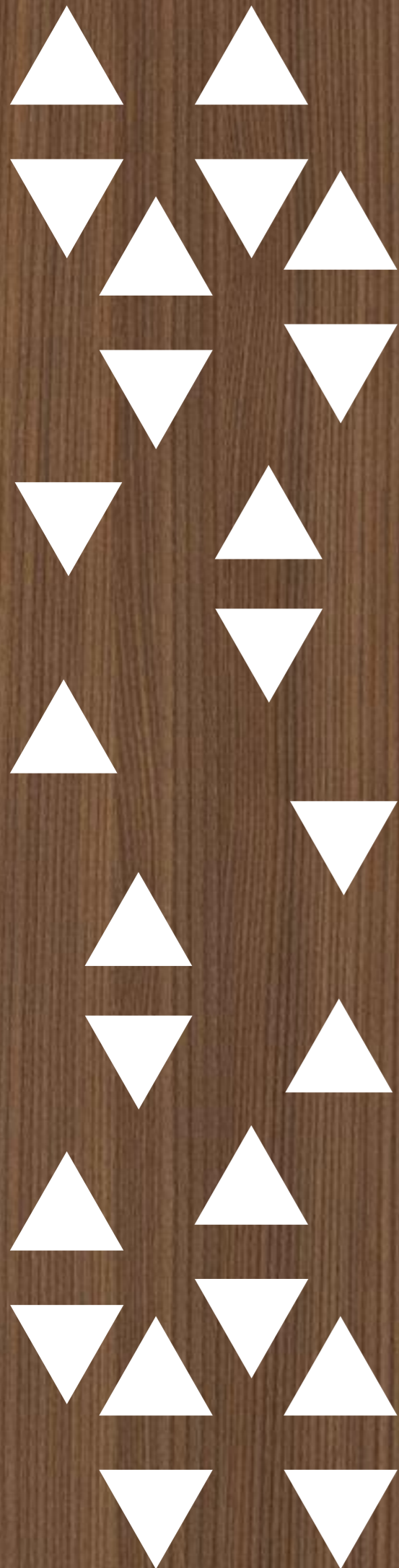
$S = 63,00 \text{ m}^2$



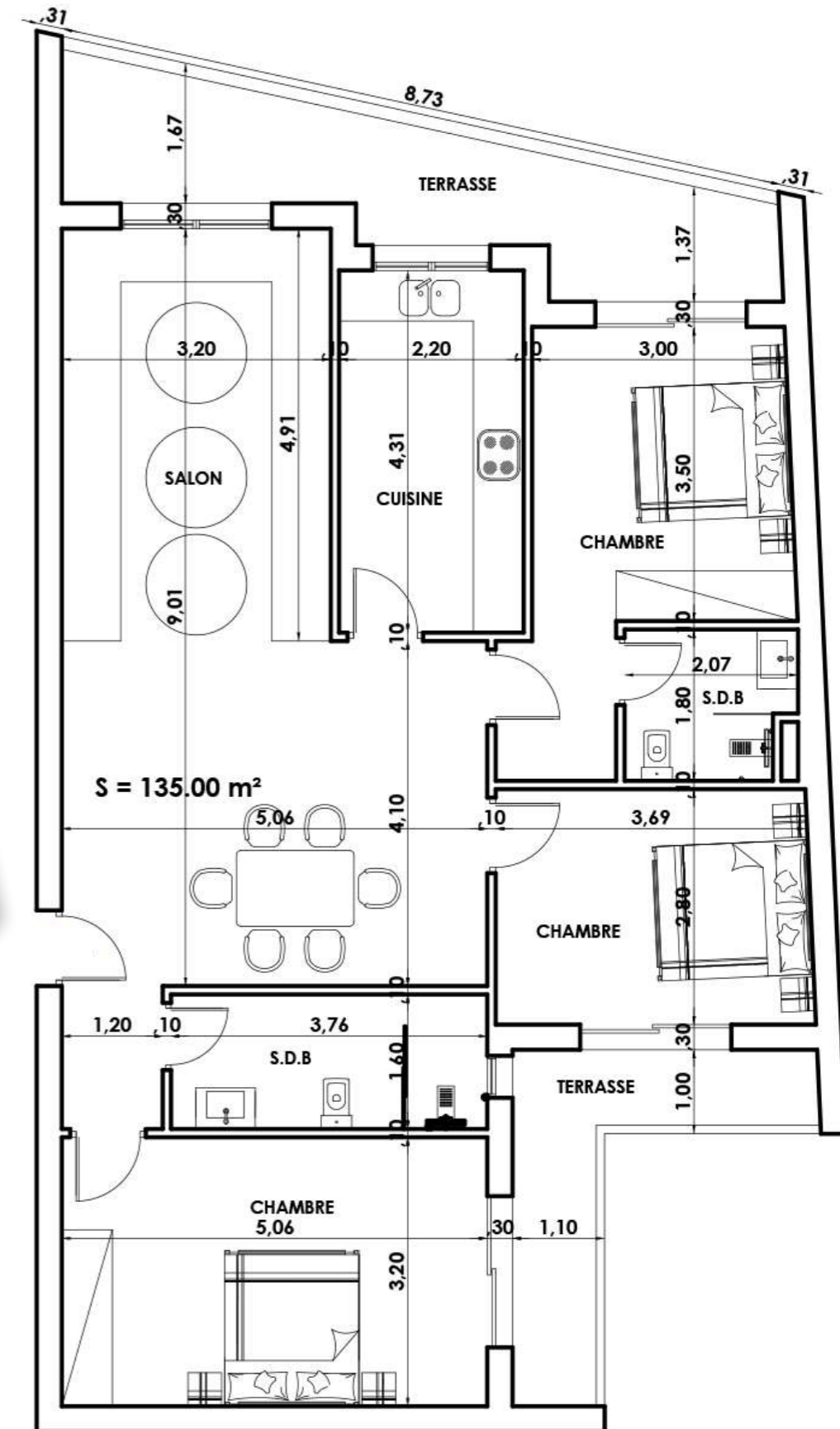
Groupe
Aya & Yusra



*Type des
appartements*
3^{ème} étage



3^{ème} étage
Type 3-A

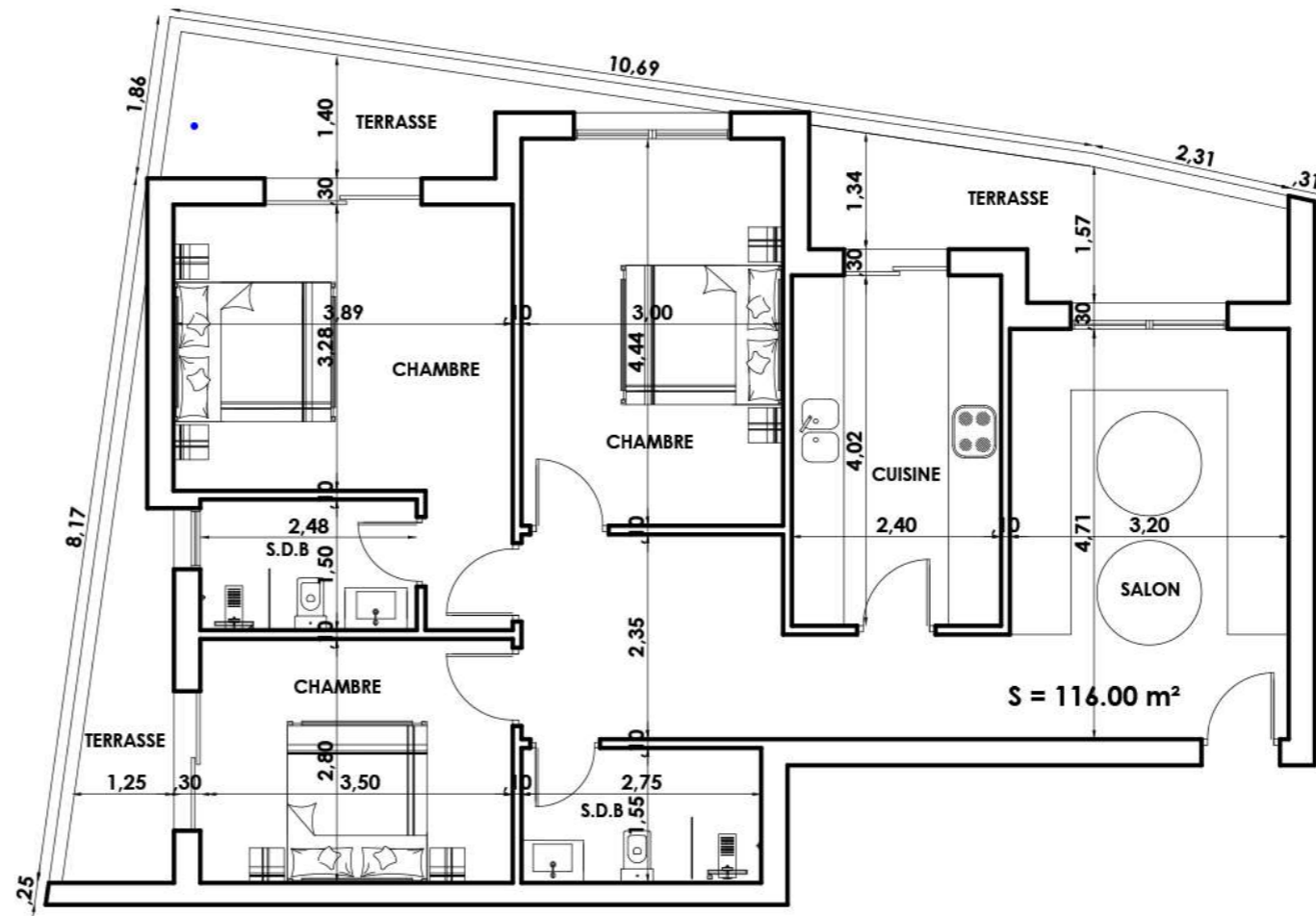


Consistance

- 01 Salon et Sejour
- 03 Chambres
- 01 Cuisine
- 02 Salle de bain
- 02 Terrasse

$S = 135,00 \text{ m}^2$

3^{ème} étage
Type 3-B



Consistance

01 *Salon*

03 *Chambres*

01 *Cuisine*

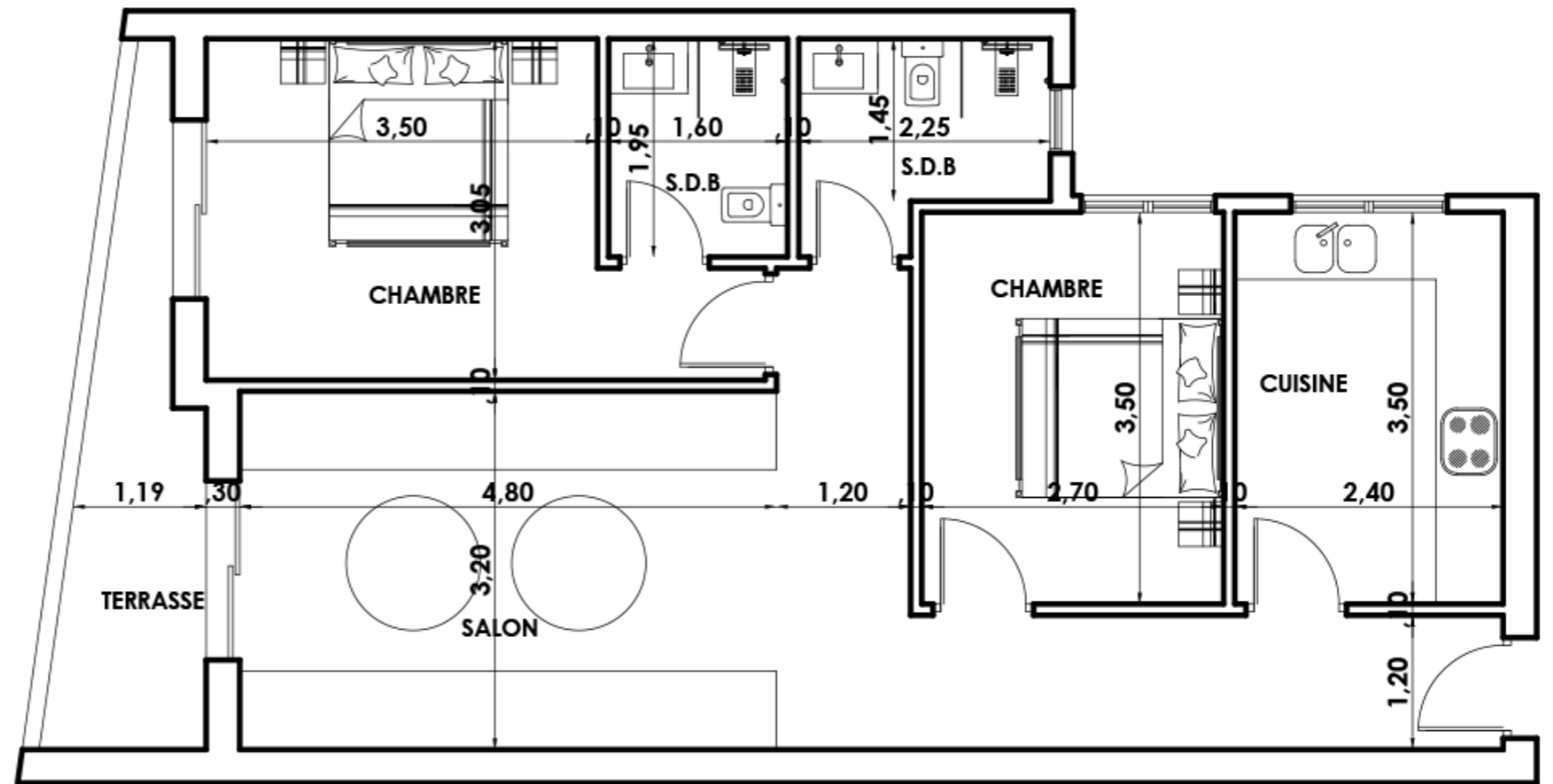
02 *Salle de bain*

03 *Terrasse*

$S = 116,00 \text{ m}^2$



3^{ème} étage
Type 3-C



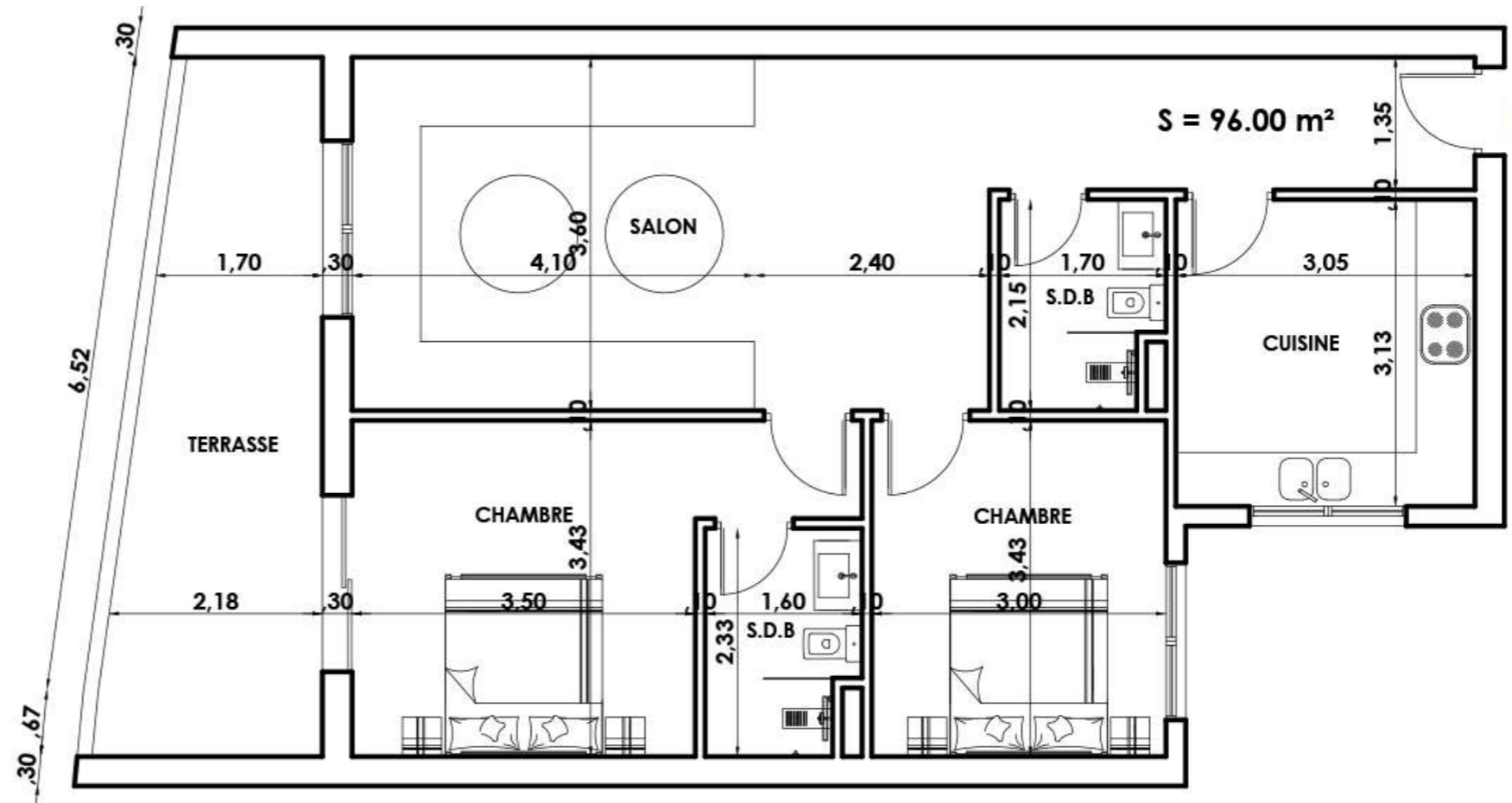
Consistance

- 01 *Salon*
- 02 *Chambres*
- 01 *Cuisine*
- 02 *Salle de bain*
- 01 *Terrasse et Cour*

$S = 80,00 \text{ m}^2$



3^{ème} étage
Type 3-D



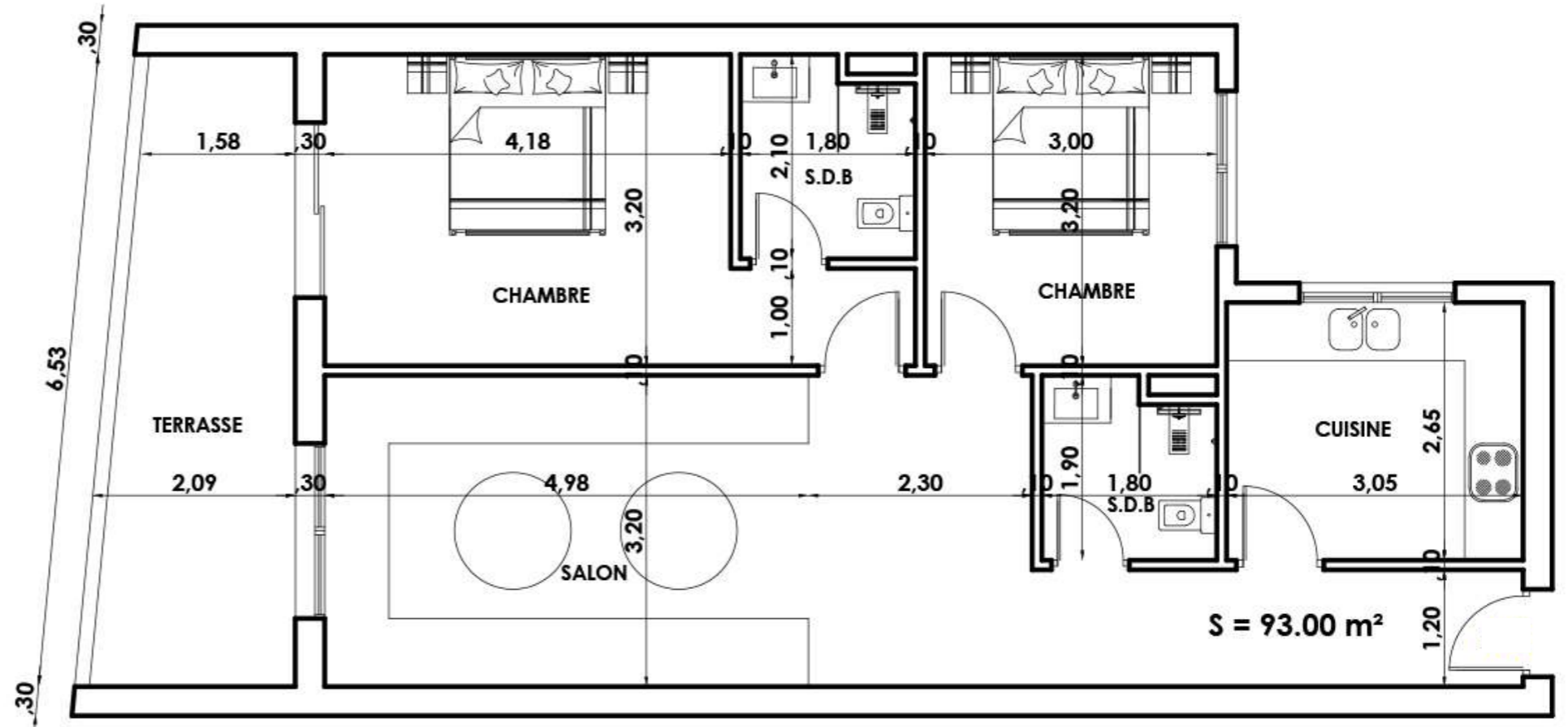
Consistance

- 01 *Salon*
- 02 *Chambres*
- 01 *Cuisine*
- 02 *Salle de bain*
- 01 *Terrasse*

$S = 96,00 \text{ m}^2$



3^{ème} étage
Type 3-E



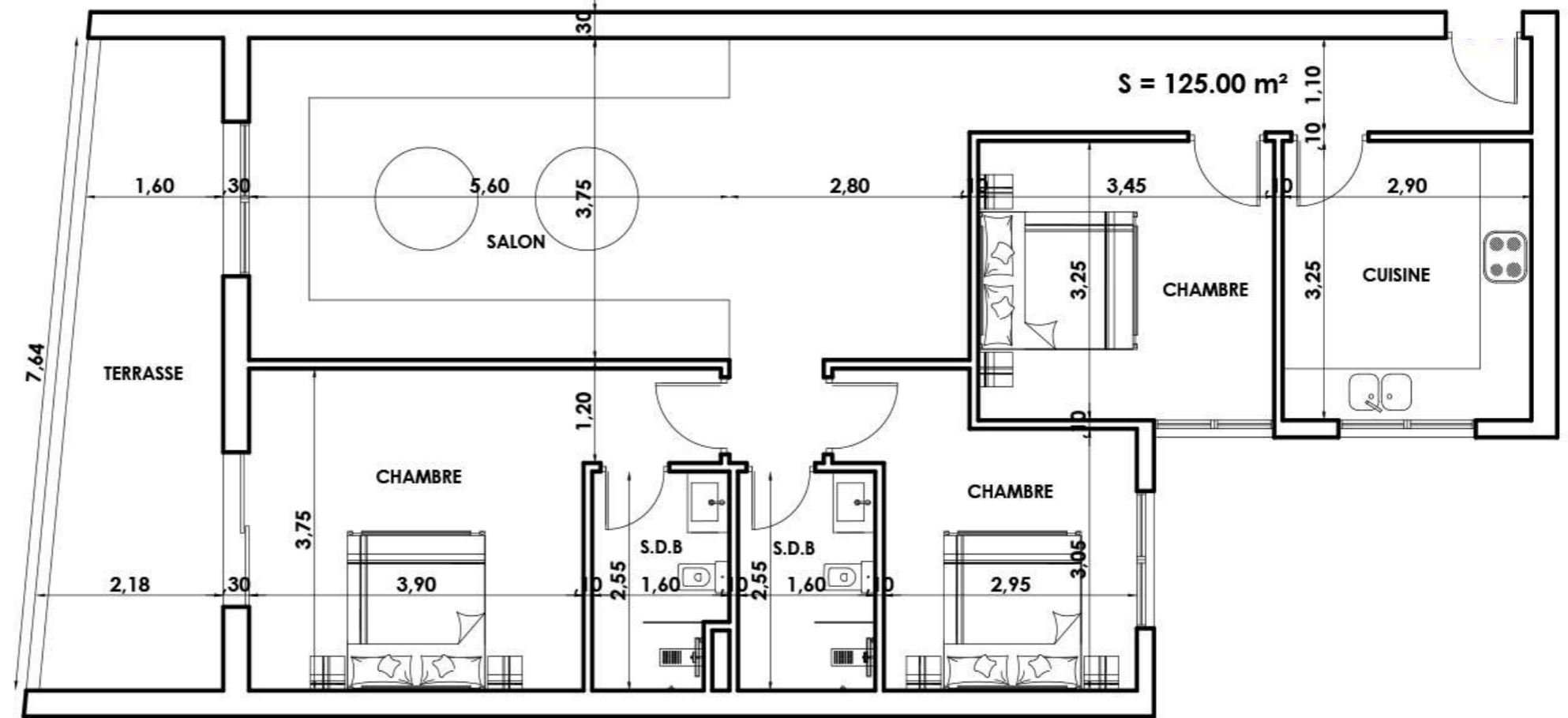
Consistance

- 01 Salon
- 02 Chambres
- 01 Cuisine
- 02 Salle de bain
- 01 Terrasse

$S = 93,00 \text{ m}^2$



3^{ème} étage
Type 3-F



Consistance

01 *Salon Et Séjour*

03 *Chambres*

01 *Cuisine*

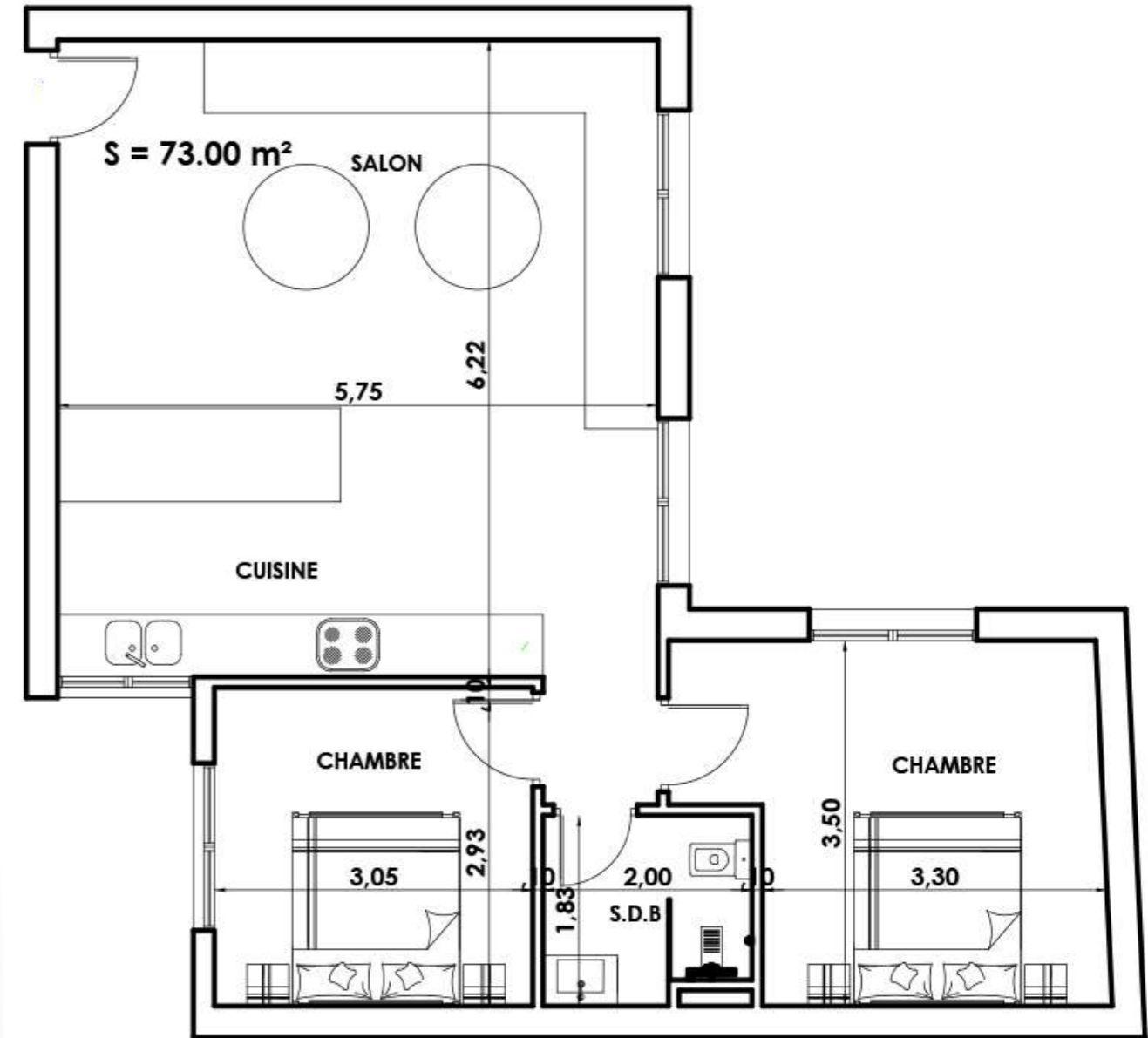
02 *Salle de bain*

01 *Terrasse*

S = 125,00 m²



3^{ème} étage
Type 3-G



Consistance

01 *Salon*

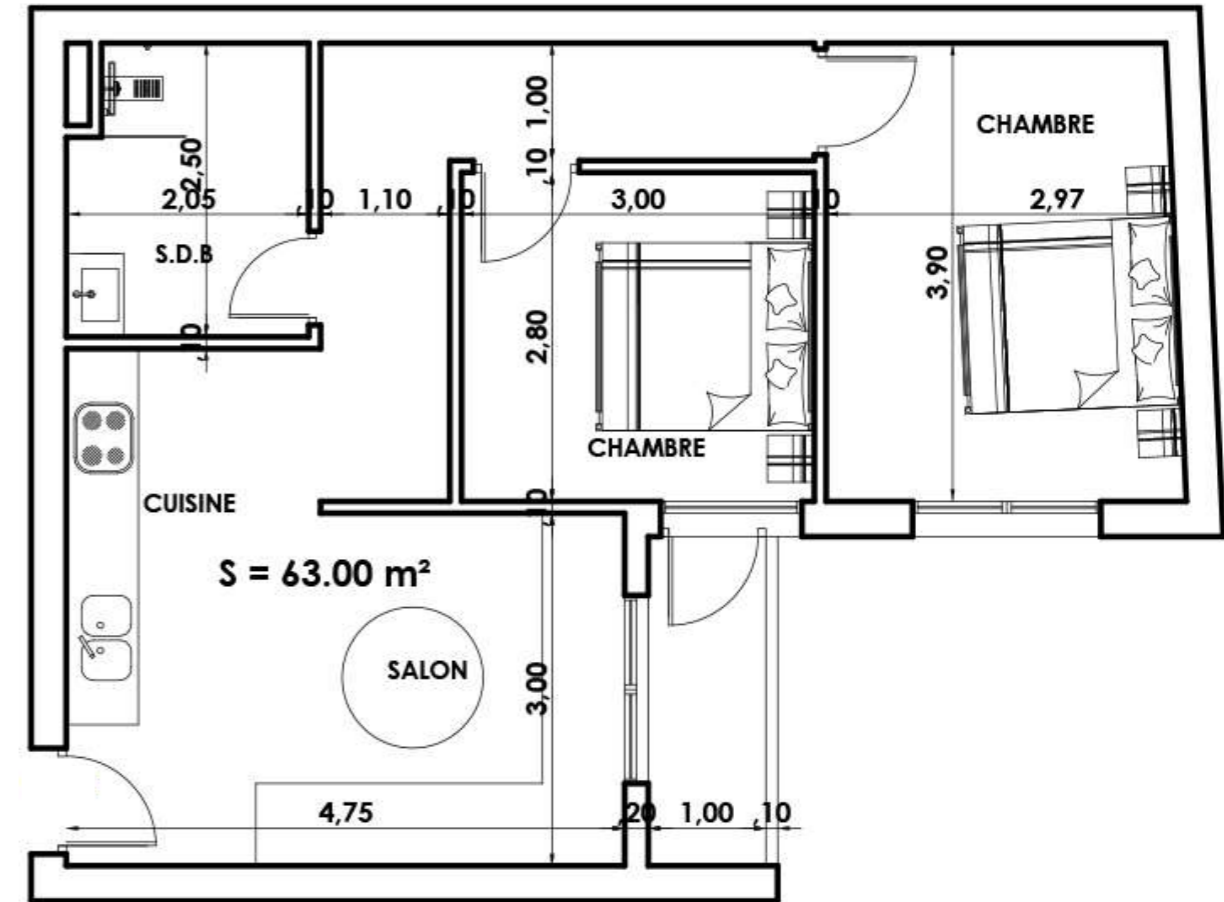
02 *Chambres*

01 *Cuisine*

01 *Salle de bain*

$S = 73,00 \text{ m}^2$

3^{ème} étage
Type 3-H



Consistance

01 *Salon*

02 *Chambres*

01 *Cuisine*

01 *Salle de bain*

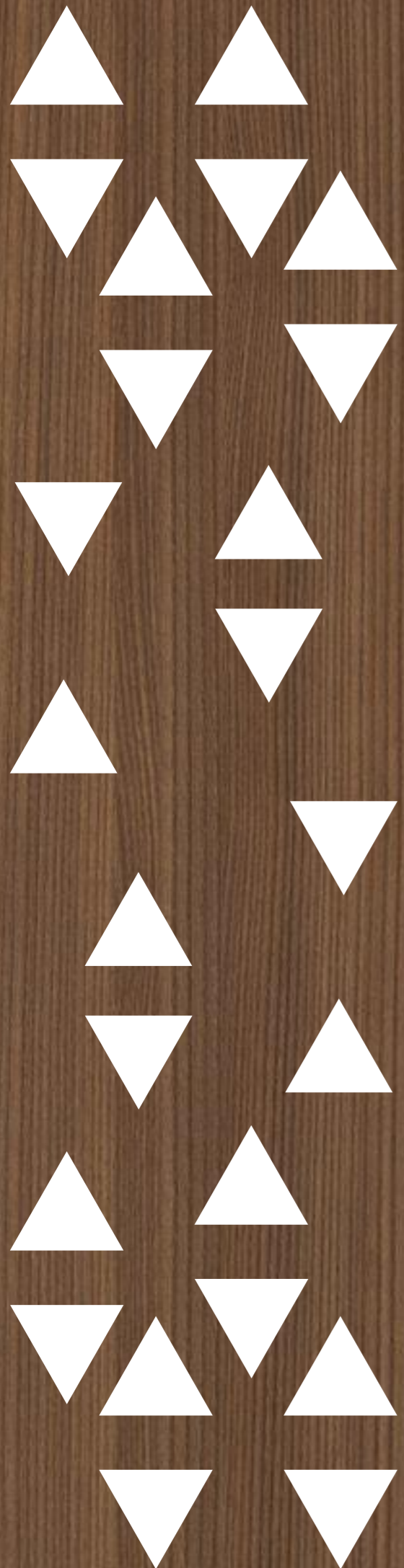
$S = 63,00 \text{ m}^2$



**Groupe
Aya & Yusra**



*Design
Intérieur*



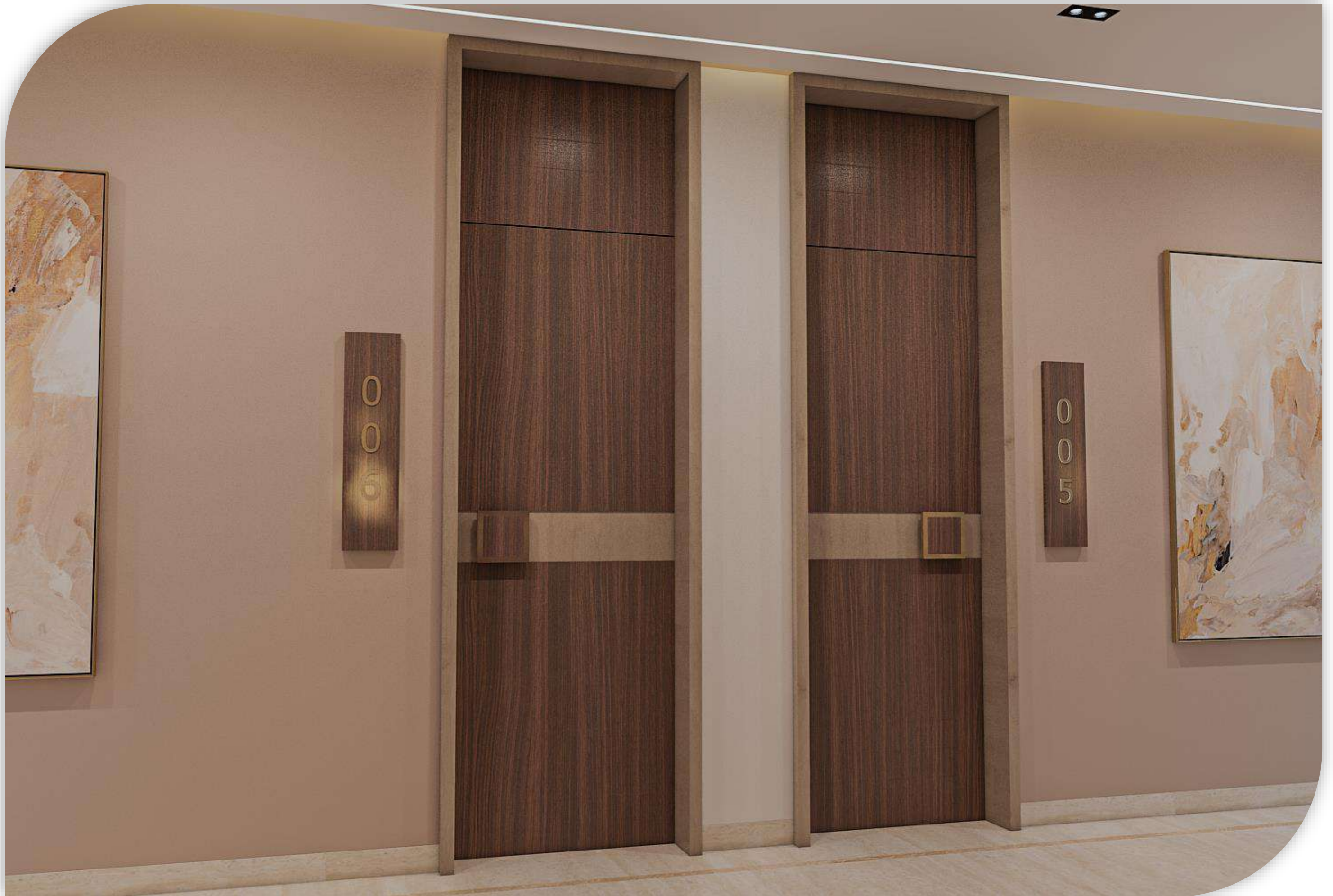
Couloir



Couloir



Couloir



Salon



Salon



Sejour



Sejour



Cuisine



Cuisine



Cuisine



Chambre 1



Chambre 1



Chambre 2



Chambre 2



Chambre 3



Chambre 3





S.D.B.

